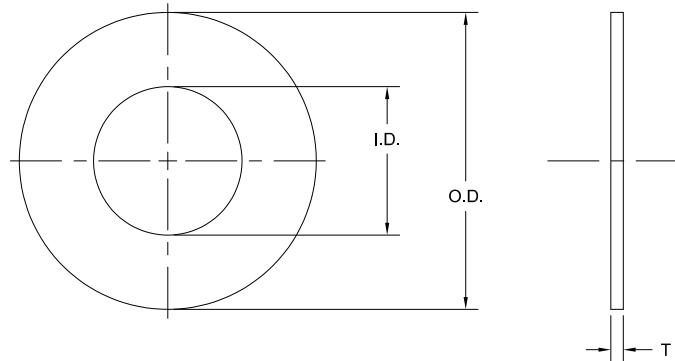


GASKET PART NUMBERS													
MODEL & SIZE	I.D.	O.D.	T	B	V	ST	SR	GF	TG	BG	EPDM	N	WG
S100= 1/8" - 1" F700= 1/2" - 3/4", 15mm, 20mm	1-3/16"	1-13/16"	1/8"	SB2432-103	SB2432-104	SB2432-106	SB2432-107	SB2432-108	SB2432-109	SB2432-110	SB2432-82	SB2432-93	SB2432-171
FV. / F700= 1" F700= 25mm	1-3/16"	2"	1/8"	SB2432-8	SB2432-9	SB2432-11	SB2432-12	SB2432-13	SB2432-14	SB2432-72	SB2432-83	SB2432-94	SB2432-172
FV= 25mm	1-1/2"	2-11/16"	1/8"	SB2432-131	SB2432-132	SB2432-134	SB2432-135	SB2432-136	SB2432-137	SB2432-138	SB2432-139	SB2432-140	SB2432-173
S100= 1-1/4" FV. / F700 / S100= 1-1/2" FV= 32mm F700= 40mm	1-1/2"	3"	1/8"	SB2432-64	SB2432-65	SB2432-67	SB2432-68	SB2432-69	SB2432-70	SB2432-73	SB2432-84	SB2432-95	SB2432-174
FV= 40mm	2"	3-15/32"	1/8"	SB2432-141	SB2432-142	SB2432-144	SB2432-145	SB2432-146	SB2432-147	SB2432-148	SB2432-149	SB2432-150	SB2432-175
F700 / S100= 2" F700= 50mm	2-1/8"	3"	1/8"	SB2432-15	SB2432-16	SB2432-18	SB2432-19	SB2432-20	SB2432-21	SB2432-74	SB2432-85	SB2432-96	SB2432-176
FV= 2", 50mm	2-1/8"	3-5/8"	1/8"	SB2432-22	SB2432-23	SB2432-25	SB2432-26	SB2432-27	SB2432-28	SB2432-75	SB2432-86	SB2432-97	SB2432-177
FV= 2.5"	2-1/2"	4"	1/8"	SB2432-151	SB2432-152	SB2432-154	SB2432-155	SB2432-156	SB2432-157	SB2432-158	SB2432-159	SB2432-160	SB2432-178
FV= 65mm	3"	4-13/16"	1/8"	SB2432-161	SB2432-162	SB2432-164	SB2432-165	SB2432-166	SB2432-167	SB2432-168	SB2432-169	SB2432-170	SB2432-179
FV= 3", 80mm F700= 2.5", 3", 65mm, 80mm	3"	5"	1/8"	SB2432-29	SB2432-30	SB2432-32	SB2432-33	SB2432-34	SB2432-35	SB2432-76	SB2432-87	SB2432-98	SB2432-180
ALL= 4", 100mm	4"	6"	1/8"	SB2432-36	SB2432-37	SB2432-39	SB2432-40	SB2432-41	SB2432-42	SB2432-77	SB2432-88	SB2432-99	SB2432-181
ALL= 5", 125mm	5"	7-1/2"	1/8"	SB2432-111	SB2432-112	SB2432-114	SB2432-115	SB2432-116	SB2432-117	SB2432-118	SB2432-119	SB2432-120	SB2432-182
ALL= 6", 150mm	6"	8-3/8"	1/8"	SB2432-43	SB2432-44	SB2432-46	SB2432-47	SB2432-48	SB2432-49	SB2432-78	SB2432-89	SB2432-100	SB2432-183
FV= 8", 200mm	8"	10-1/2"	1/8"	SB2432-50	SB2432-51	SB2432-53	SB2432-54	SB2432-55	SB2432-56	SB2432-79	SB2432-90	SB2432-101	SB2432-184
F700= 8", 200mm	7-1/2"	10"	1/8"	SB2432-121	SB2432-122	SB2432-124	SB2432-125	SB2432-126	SB2432-127	SB2432-128	SB2432-129	SB2432-130	SB2432-185
ALL= 10"	10"	12"	1/8"	SB2432-57	SB2432-58	SB2432-60	SB2432-61	SB2432-62	SB2432-63	SB2432-80	SB2432-91	SB2432-102	SB2432-186



**NOTES:**

1. "STFG" GASKETS ARE 1/16" THICK.

**2. GASKET SPECIFICATIONS:**

B = BUNA, -50°F TO 212°F [-46°C TO 100°C], 70 DUROMETER

V = VITON®, -20°F TO 400°F [-29°C TO 204°C], 75 DUROMETER

STFG = SOFT TEFLON® FLAT GASKET, GORE-TEX GR OR INTERTEX SQ-S ONLY,  
-450°F TO 600°F [-268°C TO 316°C]

ST = SOFT TEFLON® ROPE, -75°F TO 450°F [-92°C TO 232°C]

SR = RED SILICONE, -75°F TO 450°F [-59°C TO 232°C], 70 DUROMETER

GF = GRAFOIL® GHL, TO 2000°F [TO 1093°C]

TG = TAN GYLON® 3500, TO 450°F [-212°C TO 260°C]

BG = BLUE GARLOCK® 3000, TO 700°F [TO 371°C]

EPDM = ETHYLENE-PROPYLENE, -55°F TO 250°F [-48°C TO 121°C], 70 DUROMETER

N = NEOPRENE, -45°F TO 250°F [-42°C TO 121°C], 70 DUROMETER

WG = WHITE GYLON 3545, -450°F TO 500°F [-268°C TO 260°C]

3. ALL TRADEMARKS ARE PROPERTY OF THEIR RESPECTIVE OWNERS.

4. ALL INFORMATION IS SUBJECT TO CHANGE WITHOUT NOTICE.

GASKET PART NUMBERS				
MODEL & SIZE	I.D.	O.D.	T	STFG
S100= 1/8" - 1" F700= 1/2" - 3/4", 15mm, 20mm	1-3/16"	1-13/16"	1/16"	SB2432-105
FV. / F700= 1" F700= 25mm	1-3/16"	2"	1/16"	SB2432-10
FV= 25mm	1-1/2"	2-11/16"	1/16"	SB2432-133
S100= 1-1/4" FV. / F700 / S100= 1-1/2" FV= 32mm F700= 40mm	1-1/2"	3"	1/16"	SB2432-66
FV= 40mm	2"	3-15/32"	1/16"	SB2432-143
F700 / S100= 2" F700= 50mm	2-1/8"	3"	1/16"	SB2432-17
FV= 2", 50mm	2-1/8"	3-5/8"	1/16"	SB2432-24
FV= 2.5"	2-1/2"	4"	1/16"	SB2432-153
FV= 65mm	3"	4-13/16"	1/16"	SB2432-163
FV= 3", 80mm F700= 2.5", 3", 65mm, 80mm	3"	5"	1/16"	SB2432-31
ALL= 4", 100mm	4"	6"	1/16"	SB2432-38
ALL= 5", 125mm	5"	7-1/2"	1/16"	SB2432-113
ALL= 6", 150mm	6"	8-3/8"	1/16"	SB2432-45
FV= 8", 200mm	8"	10-1/2"	1/16"	SB2432-52
F700= 8", 200mm	7-1/2"	10"	1/16"	SB2432-123
ALL= 10"	10"	12"	1/16"	SB2432-59

NOTICE  
THIS DRAWING IS THE PROPERTY OF J.M. CANTY AND MUST BE RETURNED WITHOUT REPRODUCTION OR DUPLICATION, AT ANY TIME UPON REQUEST. BUT IN ANY EVENT AS SOON AS IT HAS SERVED THE PURPOSE FOR WHICH IT WAS FURNISHED, WHILE IN THE POSSESSION OF THE RECIPIENT, IT MUST BE PROPERLY SAFEGUARDED AGAINST DISCLOSURE TO ANYONE EXCEPT THOSE EMPLOYEES WHO REQUIRE IT FOR WORK OR JOB. THE RECIPIENT MUST KEEP CONFIDENTIAL AND REQUIRE HIS (HER) EMPLOYEES TO KEEP CONFIDENTIAL THE INFORMATION CONTAINED HERE ON.

**IMPORTANT**  
FOR THE REQUIRED  
MANUFACTURING  
SPECIFICATIONS SEE  
DOCUMENT #A4955

NOTE: FAILURE TO  
RECEIVE DOCUMENT  
DOES NOT WAIVE  
VENDOR  
RESPONSIBILITY

DRAWN BY GKW	DATE 02-Jan-90
APPROVAL RFM	DATE 02-Jan-90
ENGINEERING ANALYSIS CURRENT	DATE
MFG. APPROVAL PENDING	DATE
QUALITY CONTROL VJS	DATE

J.M. CANTY INC.  
6100 DONNER RD.  
BUFFALO, N.Y. 14094  
U.S.A.

**CANTY**  
WWW.JMCANTY.COM

J.M. CANTY INTL. LTD.  
BALLYCOOLIN BUS. PK.  
BLANCHARDSTOWN  
DUBLIN 15, IRELAND

TITLE  
FUSEVIEW™ FLAT GASKET CHARTED  
SPECIFICATIONS

SIZE C	REVISION 16	FILE NAME 90B2432
SCALE N.T.S.	SHEET 1 OF 1	