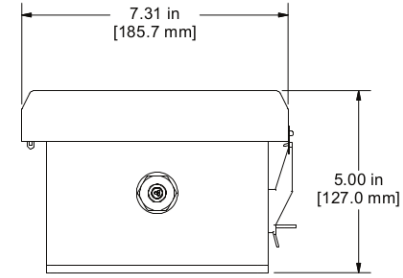


2 POLE REWIREABLE CONNECTOR MATING CONNECTOR SUPPLIED WITH CAMERA.
MALE = +12V DC
FEMALE = 12V COM.

16 FT. [4.9m] FLYING LEAD / PIGTAIL OUTPUT

16 FT. [4.9m] 3 CONDUCTOR FLYING LEAD / PIGTAIL INPUT CABLE.
BR = LIVE AC INPUT
BL = NEUTRAL AC INPUT
GRY = EARTH GROUND INPUT

FIBERGLASS ENCLOSURE



SPECIFICATIONS	
P/N	VC9550-100
MODEL	CAMERA PSU, IP66 / NEMA 4X, 230V AC IN, 12V DC OUT
INPUT SPECIFICATIONS	100-240V AC, 50/60 Hz, 45A
OUTPUT SPECIFICATIONS	12 VDC, 1A MAX.
FEATURES	
- IP66 / NEMA TYPE 4X ENCLOSURE.	
- MAX. RECOMMENDED DISTANCE BETWEEN PSU AND CAMERA IS 100 FT. [30.5 m] WITH 16 AWG / 1.5mm ² SHIELDED WIRE.	

NOTES:
1. ALL INFORMATION IS SUBJECT TO CHANGE WITHOUT NOTICE.

NOTICE
THIS DRAWING IS THE PROPERTY OF J.M. CANTY AND MUST BE RETURNED WITHOUT REPRODUCTION OR DUPLICATION, AT ANY TIME UPON REQUEST, BUT IN ANY EVENT AS SOON AS IT HAS SERVED THE PURPOSE FOR WHICH IT WAS FURNISHED. WHILE IN THE POSSESSION OF THE RECIPIENT, IT MUST BE PROPERLY SAFEGUARDED AGAINST DISCLOSURE TO ANYONE EXCEPT THOSE EMPLOYEES WHO REQUIRE IT FOR WORK OR JOB. THE RECIPIENT MUST KEEP CONFIDENTIAL AND REQUIRE HIS (HER) EMPLOYEES TO KEEP CONFIDENTIAL THE INFORMATION CONTAINED HERE ON.

IMPORTANT
FOR THE REQUIRED MANUFACTURING SPECIFICATIONS SEE DOCUMENT #A4955

NOTE: FAILURE TO RECEIVE DOCUMENT DOES NOT WAIVE VENDOR RESPONSIBILITY

DRAWN BY	DATE
JD	08/24/07
APPROVAL	DATE
JD	08/27/07
ENGINEERING ANALYSIS	DATE
CURRENT	
MFG. APPROVAL	DATE
PENDING	
QUALITY CONTROL	DATE
I.O.A.	

J.M. CANTY INC.
6100 DONNER RD.
BUFFALO, N.Y. 14094
U.S.A.



J.M. CANTY INTL. LTD.
BALLYCOOLIN BUS. PK.
BLANCHARDSTOWN
DUBLIN 15, IRELAND

TITLE	
CAMERA POWER SUPPLY SPECIFICATIONS, P/N VC9550-100, IP66 / NEMA 4X, 230V AC IN, 12V DC OUT	
SIZE	REVISION
C	0
SCALE	AS NOTED
FILE NAME	C10882
SHEET 1 OF 1	