

NOTES:

1. REFERENCE THE FOLLOWING DATSHEETS FOR VARIOUS MODELS AVAILABLE:

- TA6898-1 - INDUSTRIAL SURVEILLANCE CAMERA SYSTEMS
- TA10259-1 - MOLTEN GLASS LEVEL MEASUREMENT SYSTEMS
- TA10494-100 - FLOAT GLASS WIDTH MEASUREMENT SYSTEMS

NOTICE
 THIS DRAWING IS THE PROPERTY OF J.M. CANTY AND MUST BE RETURNED WITHOUT REPRODUCTION OR DUPLICATION, AT ANY TIME UPON REQUEST, BUT IN ANY EVENT AS SOON AS IT HAS SERVED THE PURPOSE FOR WHICH IT WAS FURNISHED, WHILE IN THE POSSESSION OF THE RECIPIENT, IT MUST BE PROPERLY SAFEGUARDED AGAINST DISCLOSURE TO ANYONE EXCEPT THOSE EMPLOYEES WHO REQUIRE IT FOR WORK OR JOB. THE RECIPIENT MUST KEEP CONFIDENTIAL AND REQUIRE HIS (HER) EMPLOYEES TO KEEP CONFIDENTIAL THE INFORMATION CONTAINED HERE ON.

IMPORTANT
 FOR THE REQUIRED MANUFACTURING SPECIFICATIONS SEE DOCUMENT #A4955

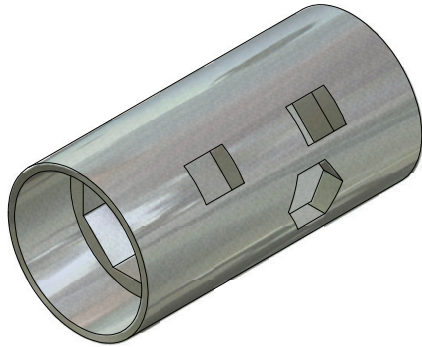
NOTE: FAILURE TO RECEIVE DOCUMENT DOES NOT WAIVE VENDOR RESPONSIBILITY

DRAWN BY JD	DATE 08/14/08
APPROVAL JD	DATE 08/14/08
ENGINEERING ANALYSIS CURRENT	DATE
MFG. APPROVAL PENDING	DATE
QUALITY CONTROL I.O.A.	DATE

J.M. CANTY INC. 6100 DONNER RD. BUFFALO, N.Y. 14094 U.S.A.		CANTY WWW.JMCANTY.COM	J.M. CANTY INTL. LTD. BALLYCOOLIN BUS. PK. BLANCHARDSTOWN DUBLIN 15, IRELAND
TITLE INDUSTRIAL SURVEILLANCE CAMERA OPTIONAL EQUIPMENT - EXPLODED ASSEMBLY			
SIZE / REVISION C 0	FILE NAME TA10259-200		
SCALE AS NOTED	SHEET 1 OF 1		

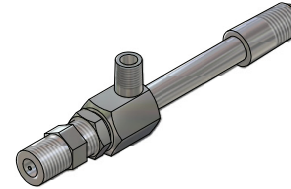
SHEET 2 OF 2

1. INSULATION JACKET



- INSULATES CAMERA FROM HIGH AMBIENT TEMPERATURES UP TO 200°F [93°C]. CCD CAMERA INSIDE ENCLOSURE MUST BE < 120°F [49°C] FOR CONTINUOUS OPERATION.
- THERMAL INSULATION, 1" THICK, 11 lb. NEEDED MAT FILLER.
- SEWN / STAPLED EDGES.
- STAINLESS STEEL WIRETWIST FASTENERS AND HOOKS.
- PRE-FABRICATED WIRE INLET, COOLING TUBE CLEARANCE HOLES.
- EASY TO INSTALL.

2. VORTEX COOLING TUBE



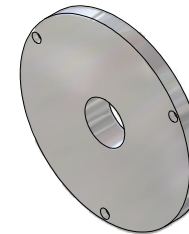
- PROVIDES COLD AIR PURGE OF CAMERAS FOR HIGH AMBIENT TEMPERATURE LOCATIONS.
- ACCEPTS CLEAN, DRY INSTRUMENT AIR, 100 PSI, 8 SCFM MINIMUM. SEPARATES AIR INTO A HOT AND A COLD COMPONENT. COLD AIR IS ROUTED INTO CAMERA HOUSING TO COOL ELECTRONICS. HOT AIR IS EXHAUSTED INTO AMBIENT. CCD CAMERA INSIDE ENCLOSURE MUST BE < 120°F [49°C] FOR CONTINUOUS OPERATION.
- LOWERS CUSTOMER'S SUPPLY AIR TEMPERATURE A MAXIMUM OF 50°F [10°C]. SUPPLY AIR MUST BE 100°F [38°C] MAX.
- 1/8-27 NPT MALE AIR INLET CONNECTION. 1/4-18 NPT MALE EXHAUST.
- CANNOT BE USED IN EXPLOSION PROOF / FLAME PROOF APPLICATIONS.

3. SURVEILLANCE JET SPRAY RING



- GENERATES A HIGH PRESSURE VORTEX CLEANING ACTION USING CLEAN, DRY AIR TO REMOVE DEPOSITS FROM CAMERA FUSED GLASS.
- SPECIALLY DESIGNED CLEANING PORTS PROVIDE MAXIMUM CLEANING POWER.
- CAN BE USED FOR INSTANTANEOUS BLAST-OFF OR CONTINUOUS PREVENTATIVE CLEANING ACTION.
- ALUMINUM CONSTRUCTION STANDARD. STAINLESS STEEL OPTIONS AVAILABLE.
- 1/8-27 NPT FEMALE INLET CONNECTION.
- FULLY COMPATIBLE WITH ALL CANTY ORIFICE PLATES.
- AIR SUPPLY REQUIRES CLEAN, DRY INSTRUMENT AIR WITH A FLOWRATE OF 4 SCFM. WHEN USED WITH A COOLING TUBE, AIR CAN BE SUPPLIED BY CONNECTING TO COOLING TUBE HOT AIR EXHAUST.

3. ORIFICE PLATE



- PROVIDES VENTURI EFFECT FOR SPRAY RING EXHAUST TO KEEP DIRT, DEBRIS FROM ACCUMULATING ON CAMERA FUSED GLASS. MAXIMIZES EFFECTIVENESS OF SPRAY RING.
- SHIELDS CAMERA FROM RADIANT HEAT.
- PRECISION DESIGNED TO FIT THE REQUIRED CAMERA VIEW ANGLE FOR MAXIMUM PERFORMANCE.

NOTICE
THIS DRAWING IS THE PROPERTY OF J.M. CANTY AND MUST BE RETURNED WITHOUT REPRODUCTION OR DUPLICATION, AT ANY TIME UPON REQUEST, BUT IN ANY EVENT AS SOON AS IT HAS SERVED THE PURPOSE FOR WHICH IT WAS FURNISHED, WHILE IN THE POSSESSION OF THE RECIPIENT, IT MUST BE PROPERLY SAFEGUARDED AGAINST DISCLOSURE TO ANYONE EXCEPT THOSE EMPLOYEES WHO REQUIRE IT FOR WORK OR JOB. THE RECIPIENT MUST KEEP CONFIDENTIAL AND REQUIRE HIS (HER) EMPLOYEES TO KEEP CONFIDENTIAL THE INFORMATION CONTAINED HERE ON.

IMPORTANT
FOR THE REQUIRED MANUFACTURING SPECIFICATIONS SEE DOCUMENT #A4955

NOTE: FAILURE TO RECEIVE DOCUMENT DOES NOT WAIVE VENDOR RESPONSIBILITY

DRAWN BY JD	DATE 08/14/08
APPROVAL JD	DATE 08/14/08
ENGINEERING ANALYSIS CURRENT	DATE
MFG. APPROVAL PENDING	DATE
QUALITY CONTROL I.O.A.	DATE

J.M. CANTY INC.
6100 DONNER RD.
BUFFALO, N.Y. 14094
U.S.A.

CANTY

J.M. CANTY INTL. LTD.
BALLYCOOLIN BUS. PK.
BLANCHARDSTOWN
DUBLIN 15, IRELAND

TITLE
**INDUSTRIAL SURVEILLANCE CAMERA
OPTIONAL EQUIPMENT - EXPLODED
ASSEMBLY**

SIZE / REVISION
C 0

FILE NAME
TA10259-200

SCALE AS NOTED

SHEET 2 OF 2