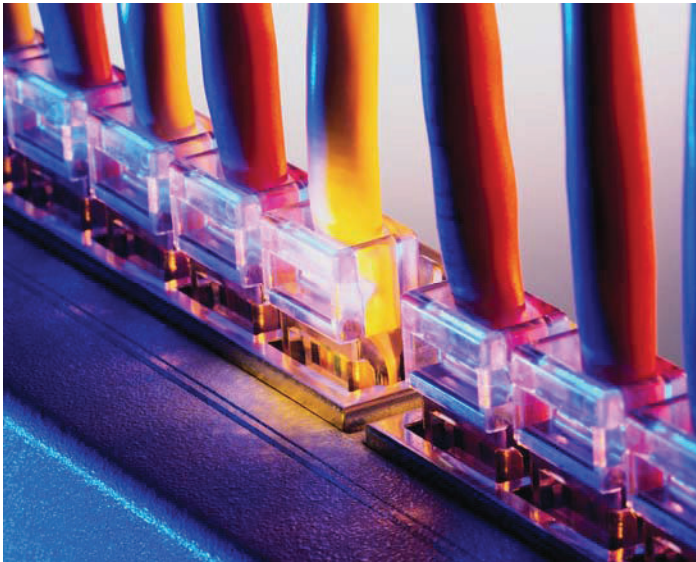


# CANTY

## PROCESS TECHNOLOGY

### OPC Client & Server - Open Connectivity For Process Control



#### HOW IT WORKS

Canty provides both an OPC client and OPC server to connect our CantyVision Client Software to our customers' digital control systems. OPC is a worldwide standard for open connectivity and information flow for process control over standard Ethernet networks. This group of standards provides specifications for communicating real-time data from data acquisition devices such as Programmable Logic Controllers (PLC) to display and interface devices like Human-Machine Interfaces (HMI). This specification is a non-proprietary technical specification that defines a set of standard interfaces initially based upon Microsoft's OLE/COM technology.

Historically, each software or application developer was required to write a custom interface or driver to exchange data with hardware field devices. OPC eliminates this requirement by defining a common, high performance interface that allows this work to be done once, and then easily reused by HMI, SCADA, control and custom applications. Detailed information is available on the OPC Foundation's web site.

#### FEATURES

- No need for custom drivers design or maintenance
- OPC Drivers are readily available
- Device loads are substantially lowered
- Built-in OPC client is included in CantyVision Client software.
- Stand alone OPC server is included
- Standard open communication of process control data

#### SPECIFICATIONS

- OPC Data Access 1.0 compliant Client & Server
- Communicates over standard Ethernet network.

#### CONNECTION INTERFACE

OPC defines a Common set of interfaces so application retrieves data in exactly the same format regardless of the device: Programmable Logic Controllers (PLC), Distributed Control System (DCS), Database gauge or anything else. It is a plug and play communication solution.

Based on the fundamental standards and technology of the general computing market, the OPC Foundation adapts and creates specifications that fill industry-specific needs. OPC will continue to regularize standards as needs arise and to adapt existing standards to utilize new technology.

#### APPLICATIONS

Canty's computer vision software has a built in OPC client as well as a stand alone OPC server for maximum connectivity. Data is transmitted to your DCS system via a standard Ethernet network.