

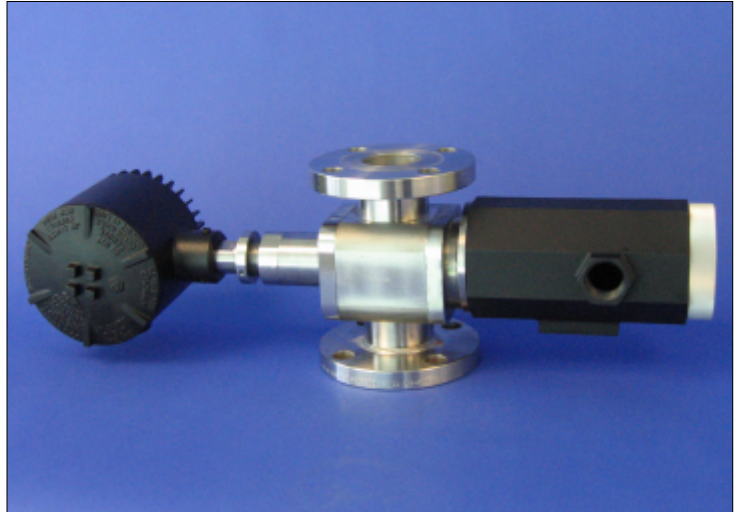
CANTY

PROCESS TECHNOLOGY

INFLOW™ TURBIDITY / COLOR ANALYSIS / PERCENT SOLIDS MEASUREMENT SYSTEMS

Combining the latest in CCD Ethernet camera technology with Canty fused glass, lighting and CANTYVISIONCLIENT™ software, the INFLOW™ Measurement System provides real time In Flow measurement of Turbidity, Color Analysis or Percent Solids, determined by the part number selected.

No sampling or lab analysis is required! Each unit can be fully integrated into existing TCP/IP networks. CANTYVISIONCLIENT™ software is installed on a user-supplied PC, and connected to the INFLOW™ measurement system via an Ethernet network. Images of the process can be viewed from any networked PC. The live images are remotely analyzed by CANTYVISIONCLIENT™ software. A comprehensive library of standard utilities and data functions provide a multitude of *real-time* process information.



The CANTY INFLOW™ Turbidity, Color Measurement or Percent Solids Measurement System uses a 0-1/2" variable insertion measurement gap. This insertion is made possible by the Fuseview™ sight glass, which allows the optical fused pieces to be located in the center of the fluid stream, which is unique to the Canty system. The fused glass seal contains no gaskets, ledges, or steps allowing the highest velocity, representative sample and keeps the sensor clean, even in the harshest of environments (polymer, crude oil, drilling mud, epoxy, etc.). The fused glass seal location keeps the sensor in line with the process temperature to avoid product build up due to thermal change. The image processor can be configured with multiple zone sensing on the image of the fluid. The results from the zones can be compared to base line values for reliability and alarm on detection of a problem.

FEATURES

- Ethernet Connectivity
- Real Time Monitoring Of Process In Flow
- Solid One Piece Central Hub
- Supplied With Internal O-ring Seals
- Easily Installed Modular Unit
- Fused Glass Process Barriers
- Regulated Light Source Emits Cold Light To Prevent Product Bake-On
- OPC, 4-20mA Current Loop, EXCEL spreadsheet and Relay Outputs Are Available

ADVANTAGES

- Provides Both A Real Time, In Flow Measurement And A Continuous Real Time View Of The Product
- Various Process Connection Sizes Available (Flanged, Tri-Clamp®, Swagelok®, Tube or NPT)
- Fully Cleanable Unit
- High Throughput
- Available In NEMA4, IP66, Explosion Proof or Flame Proof Packages
- Digital Video Storage to Customer PC / DVD or Network Drive

COMMON APPLICATIONS

- Oil in Water
- Turbidity
- Color/Opacity
- Waste Water
- Centrifuge Discharge
- Percent Solids
- Membrane Filtration
- Water In Oil
- Many, many more.

CANTY

JM Canty Inc
JM Canty Intl Ltd

Buffalo, NY USA
Dublin, Ireland

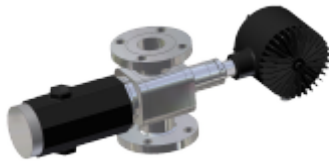
Ph: (716) 625 4227
Ph: +353 (01) 882 9621

Fax: (716) 625 4228
Fax: +353 (01) 882 9622

www.jmcanty.com

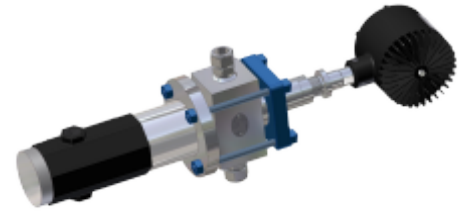
Document P/N: TA10591-1 REV. 2

MOUNTING CONNECTIONS



FLANGE CONNECTION

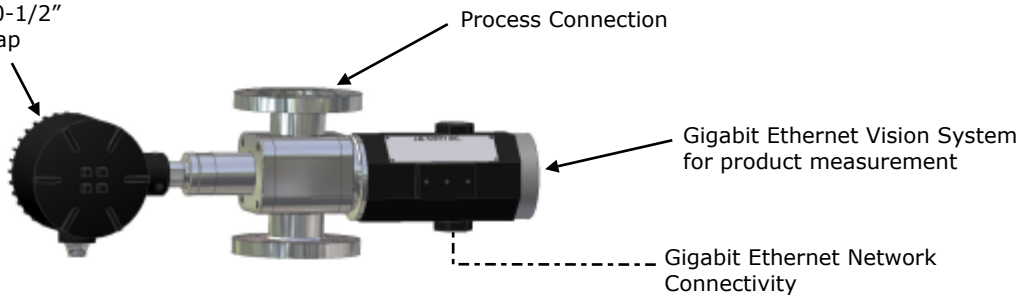
TRI-CLAMP® CONNECTION



SWAGELOK® CONNECTION

Canty Light - Provides optimal backlighting with variable 0-1/2" [12.7mm] measurement gap

TYPICAL PACKAGE



- Notes:
1. Camera and Light PSUs are not shown but must be located within 100 feet of the unit. The Camera Power Supply enclosure has the same environmental rating as the system.
 2. CantyVisionClient™ Software is included but the customer provides the PC which is not included with the system. Reference Document TA10592-1 for computer requirements.

Ordering Information

HOW TO ORDER: Select the appropriate symbols and build a part number :

EXAMPLE:

V P 1 C 1 1 1 A A 1 V

APPLICATION T - Turbidity C - Color Analysis P - Percent Solids	INTERNAL SEAL MATERIAL B - BUNA N - NEOPRENE V - VITON® K - KALREZ® S - SILICONE C - CHEMREZ® E - EPDM																												
SYSTEM CLASSIFICATION <table border="1"> <thead> <tr> <th></th> <th>Turbidity</th> <th>Color Analysis</th> <th>Percent Solids</th> </tr> </thead> <tbody> <tr> <td>1 -</td> <td>Standard</td> <td>Standard</td> <td>Standard</td> </tr> <tr> <td>2 -</td> <td></td> <td></td> <td></td> </tr> <tr> <td>3 -</td> <td></td> <td></td> <td></td> </tr> <tr> <td>4 -</td> <td></td> <td></td> <td></td> </tr> <tr> <td>5 -</td> <td></td> <td></td> <td></td> </tr> <tr> <td>6 -</td> <td></td> <td></td> <td></td> </tr> </tbody> </table>		Turbidity	Color Analysis	Percent Solids	1 -	Standard	Standard	Standard	2 -				3 -				4 -				5 -				6 -				ENVIRONMENTAL RATING 1 - NEMA 4 WEATHERPROOF 2 - IP 66 3 - EXPLOSION PROOF 4 - FLAME PROOF
	Turbidity	Color Analysis	Percent Solids																										
1 -	Standard	Standard	Standard																										
2 -																													
3 -																													
4 -																													
5 -																													
6 -																													
CONNECTION TYPE A - Tri Clamp® B - Swagelok® C - Flange (ANSI/DIN) D - Tube Diameter E - NPT (Female)	ANSI OR DIN PRESSURE RATING / FLANGE PATTERN <table border="1"> <thead> <tr> <th>ANSI</th> <th>DIN</th> </tr> </thead> <tbody> <tr> <td>A - 150 PSI</td> <td>D - 10 BAR</td> </tr> <tr> <td>B - 300 PSI</td> <td>E - 16 BAR</td> </tr> <tr> <td>C - 600 PSI</td> <td>F - 25 BAR</td> </tr> </tbody> </table>	ANSI	DIN	A - 150 PSI	D - 10 BAR	B - 300 PSI	E - 16 BAR	C - 600 PSI	F - 25 BAR																				
ANSI	DIN																												
A - 150 PSI	D - 10 BAR																												
B - 300 PSI	E - 16 BAR																												
C - 600 PSI	F - 25 BAR																												
CONNECTION SIZE <table border="1"> <tbody> <tr> <td>0 - 1/2" (12.7mm)</td> <td>3 - 3" (80mm)</td> </tr> <tr> <td>7 - 3/4" (19mm)</td> <td>4 - 4" (100mm)</td> </tr> <tr> <td>1 - 1" (25mm)</td> <td>6 - 6" (150mm)</td> </tr> <tr> <td>5 - 1.5" (38mm)</td> <td>8 - 8" (200mm)</td> </tr> <tr> <td>2 - 2" (50mm)</td> <td></td> </tr> </tbody> </table>	0 - 1/2" (12.7mm)	3 - 3" (80mm)	7 - 3/4" (19mm)	4 - 4" (100mm)	1 - 1" (25mm)	6 - 6" (150mm)	5 - 1.5" (38mm)	8 - 8" (200mm)	2 - 2" (50mm)		INPUT POWER A - 120 V AC / 60Hz / 250W B - 230 V AC / 50Hz / 250W																		
0 - 1/2" (12.7mm)	3 - 3" (80mm)																												
7 - 3/4" (19mm)	4 - 4" (100mm)																												
1 - 1" (25mm)	6 - 6" (150mm)																												
5 - 1.5" (38mm)	8 - 8" (200mm)																												
2 - 2" (50mm)																													
WETTED METAL MATERIAL 1 - 316L Stainless Steel 2 - Hastelloy® C276 or equal 3 - Hastelloy® C-22® or equal	NON-WETTED METAL MATERIAL(PRESSURE BEARING) 0 - Carbon Steel 1 - 300 Series Stainless Steel																												

CANTY JM Canty Inc
JM Canty Intl Ltd

Buffalo, NY USA
Dublin, Ireland

Ph: (716) 625 4227
Ph: +353 (01) 882 9621

Fax: (716) 625 4228
Fax: +353 (01) 882 9622