

CANTY

PROCESS TECHNOLOGY

CANTYVISIONCLIENT™ Software

SOFTWARE DESCRIPTION

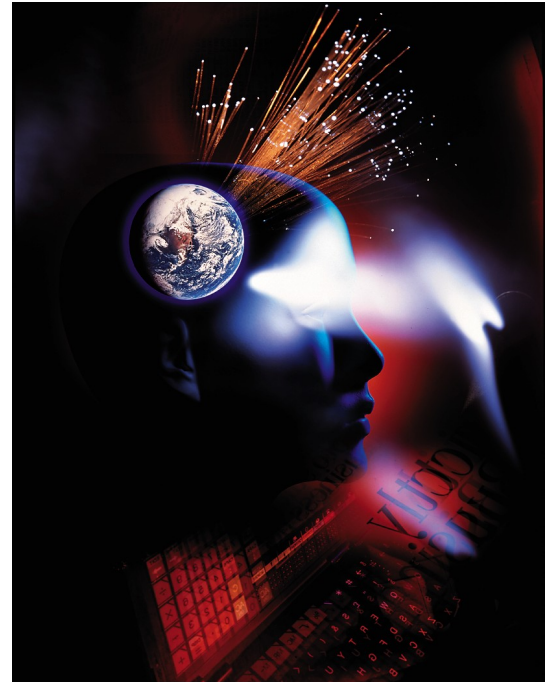
CANTYVISIONCLIENT™ Software is included with the purchase of any Canty Ethernet Camera.

CANTYVISIONCLIENT™ Software is used for both viewing and analysis. The Level/Intensity/Color (LIC) module comes standard with all Ethernet cameras and can be used for various analysis.

Real time monitoring and analysis can be done using the software. Video recording allows for video records and analysis at a later time.

The software outputs the data in various formats. The customer can select the unit of measure the data outputs-in, as well as the type of file the data outputs to. CANTYVISIONCLIENT™ Software can output results to a database, OPC, 4-20mA or even a specific file location. More than one camera can be connected to a single computer. The software can analyze on multiple applications at once.

The software is easy to use and has a built in help menu for easy access. Software is preset with ideal settings needs. Settings can easily be adjusted to accommodate customers.



COMPUTER SPECS

Desktop Recommended Requirements for LIC and Particle Sizing Packages

- 6GB RAM
- QUAD CORE 2.0 GHz CPU
- Nvidia® GeForce® 500 Series / ATI® Radeon® 6000 Series or Equiv Video Card
- 1Gb NIC with Jumbo Frame support of at least 9kB size.

- Not all Gigabit Ethernet cards support Jumbo Frames. Recommend *Intel® Pro 1000, D-Link 530T, & SMC EZ 1000 network adaptor cards*

- Gigabit Ethernet card for multiple cameras: Star Tech ST1000SPEX42 4-port Ethernet Card

Notebook Recommended Requirements for LIC and Particle Sizing Packages

- 6GB RAM
- QUAD CORE 2.0 GHz CPU
- Nvidia® GeForce® 200M / ATI® Mobility Radeon® 2000 Series or Equiv Video Card
- 1Gb NIC with Intel® Chipset that support Jumbo Frames of at least 9kB size.

- If LAN doesn't support Jumbo Frames of at least 9kB size and Notebook has an Express Card Port recommend *Sonnet Presto™ Express Card/34*

*Please use CAT6 cabling or better (300 ft. max range) to connect the camera to the computer
CANTYVISIONCLIENT™ Software is compatible with Windows® XP, Windows® Vista, Windows® 7 and 8, all at 64 Bit.*

Note: *Canty Recommends using a Desktop for analysis. Notebooks should be used for portable units*

CANTY

JM Canty Inc
JM Canty Intl Ltd

Buffalo, NY USA
Dublin, Ireland

Ph: (716) 625 4227
Ph: +353 (01) 882 9621

Fax: (716) 625 4228
Fax: +353 (01) 882 9622

www.jmcanty.com

Document P/N: TA10592-1 Rev. 8

LEVEL/INTENSITY/COLOR APPLICATIONS

- Inspection Applications (Imperfections, Out of Spec Pieces)
- Glass and Metal (Level, Width, Temperature)
- Color
- Foam Detection
- Turbidity
- Reactor Level
- Motion Detection
- Change in Color/Phase Split
- Flame Monitoring
- And More!

SUGGESTED METHODS OF DATA STORAGE

- Burn to a CD/DVD
- Record video on hard drive or DVR
- Set software to record certain instances of analysis vs. constant recording
- Set software to record a set number of snapshots at a certain time interval
- Option to record only numerical data or only video

MULTIPLE CAMERAS

Multiple Cameras can be used for viewing, recording and analysis. Canty recommends using the desktop requirements for particle sizing. A hub that supports Jumbo frames of at least 9kB is necessary. Use Cat6 cable or better.

SOFTWARE TOOLS

- Intensity Tool- can be calibrated to report temperature reading
- Particle Sizing Tool -can analyze particles size and shape as small as 0.7 microns
- Color Speck Tool- solid or liquid color analysis
- Level Tool- can determine location of liquid or solid
- Bead Sizing Tool- sizes beads or bubbles with out affecting process
- Length Tool- belt width, elimination of duplicates in packing
- Rocksize Tool- can determine size and shape of rocks instantaneously
- Froth Tool- measures the bubbles on the froth with out affecting process
- Turbidity Tool- Inline with instant analysis with no sampling needed
- CUT Tool- used to measure the average edge of the item

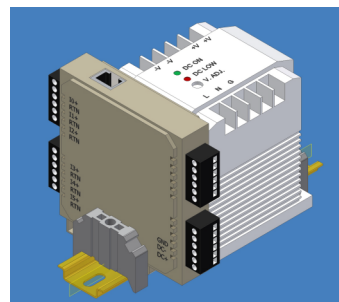
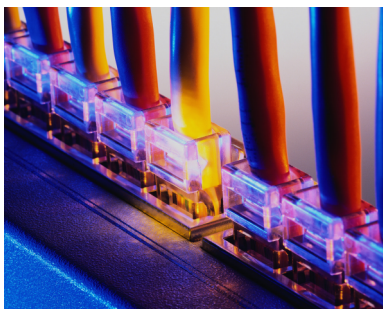
OUTPUT OPTIONS

OPC - Open Connectivity for Process Control

Canty provides an OPC client to connect CANTYVISIONCLIENT™ Software to our customers' digital control systems. This comes standard with CANTYVISIONCLIENT™! (Please see data sheet TA10560-1 for complete information on this offering).

Ethernet Output Module

Canty also offers an Ethernet controlled 4-20mA signal from CANTYVISIONCLIENT™, which is a 4-20mA current loop signal. This is a separate DIN rail mounted module that can be purchased as an accessory. (Please see data sheet TA9688-1 for complete information on this offering).



CANTY

JM Canty Inc
JM Canty Intl Ltd

Buffalo, NY USA
Dublin, Ireland

Ph: (716) 625 4227
Ph: +353 (01) 882 9621

Fax: (716) 625 4228
Fax: +353 (01) 882 9622