

CANTY

PROCESS TECHNOLOGY

LAB SOLIDSIZER™ with Color Analysis



FEATURES

- Defect particle distribution by color, major, minor diameter, area, perimeter available with Cauty Vector System
- Scale for calibration of sample
- Adjustable lens magnification (sub micron to macro size in inches)
- Uniform surface lighting
- Shape Analysis
- External video connectors for signal processing by Cauty Vector System (optional)
- Optional light filters available for wavelength sensitive materials

THE CANTY ADVANTAGE

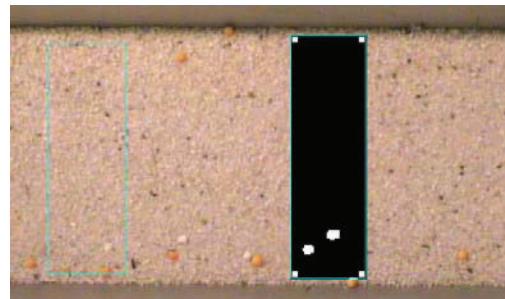
LAB SOLIDSIZER™ with Color Analysis is accomplished by using the fundamentals of the RGB and YUV color scale system. A Cauty Lab analyzer is used to continually capture images as the flow of product moves over a vibratory feeder. The camera mounted over the stream is surrounded by a ring light for illumination of the stream. Since specs are a different color from the product they appear in, they are extremely easy for CANTYVISIONCLIENT™ software to differentiate. When a color speck occurs, the particle is easily detected and an optional 4-20mA output option can be provided. The CCD camera is connected to a Cauty Vector System image processor for analysis.

APPLICATIONS

- Pharmaceutical powders
- Polymer pellets and beads
- Agricultural products
- Aggregates
- Detergents
- Glass bead applications
- Food products
- Agglomeration control
- Spray dryers and fluid bed applications
- End product Q.C. and lot certification
- Many, Many more!

SPECIFICATIONS

- Power: 120 VAC / 60 Hz (230VAC / 50 Hz)
- Shutter Speed: variable up to 1/100,000 sec



Ordering Information

HOW TO ORDER: Select the appropriate symbols and build a part number as shown:

EXAMPLE:

S B - B 1 L 4 1 1 1

STYLE SELECTION
B - Black Speck*

VIDEO SYSTEM FORMAT
B - NTSC (U.S. Color) 640 x 480 (BS Only)

ENVIRONMENTAL RATING
1 - Lab Enclosure

SYSTEM ILLUMINATION
L - Back/Front Light (Ringlight)

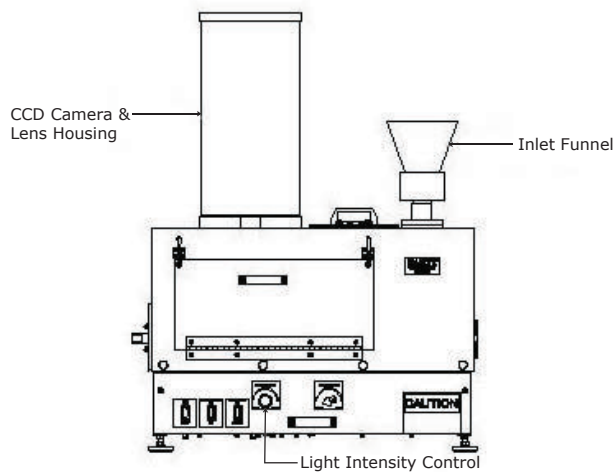
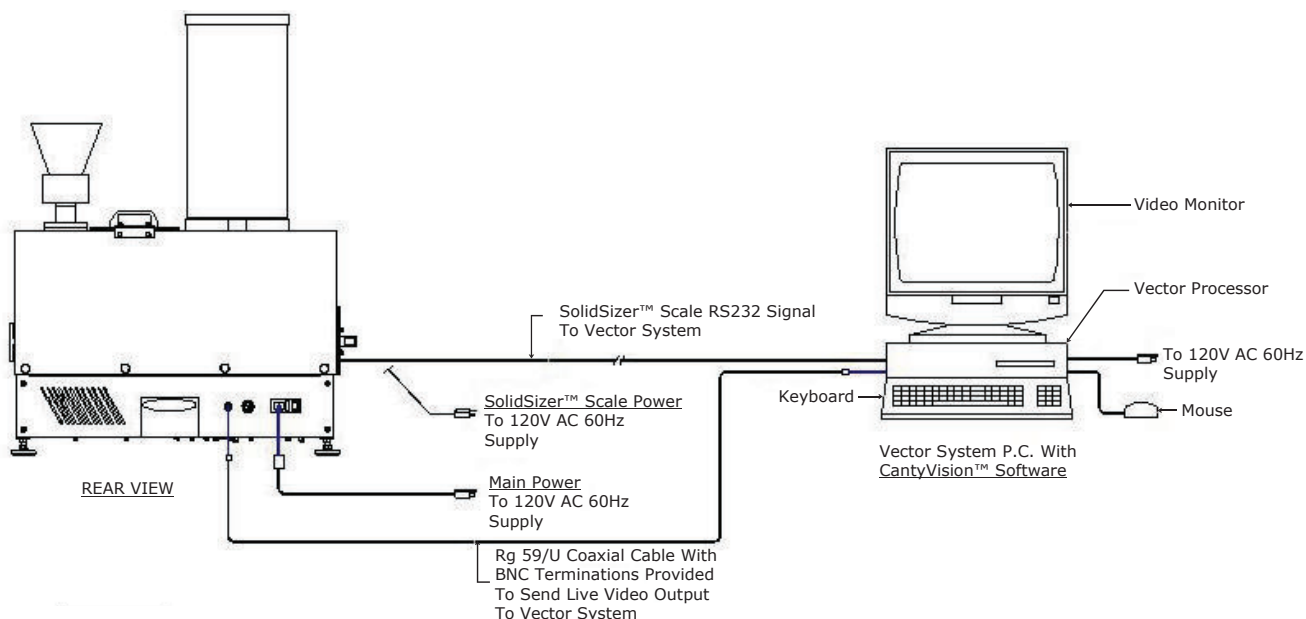
LENS
4 - Color Only (BS Only)

ACCESSORIES
1 - No Accessories
3 - Black Speck and Particle Size [50 - 3000 microns]

TRAY MATERIAL
1 - Aluminum Tray

INPUT POWER
1 - 120V AC 60 Hz

*Application also includes Color Speck



Front View
-See Rear View for Cable Connections