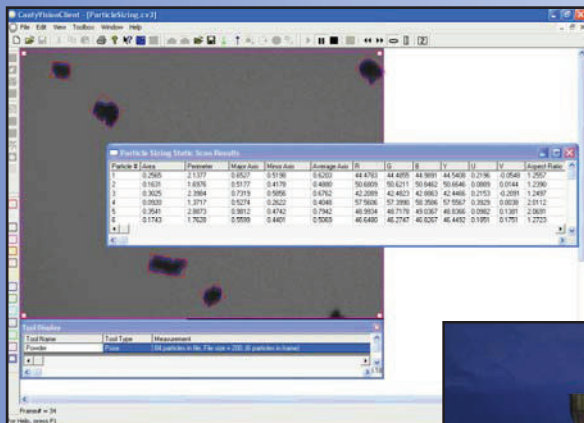


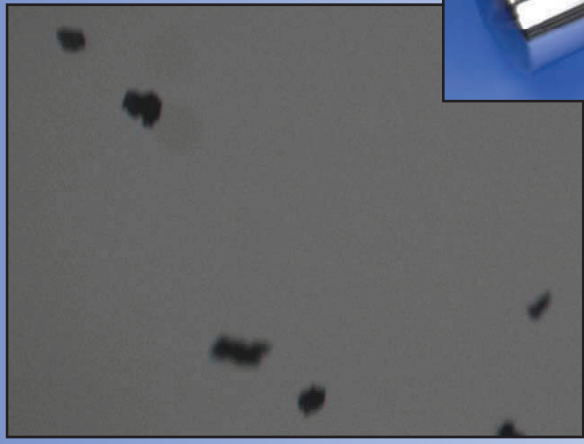
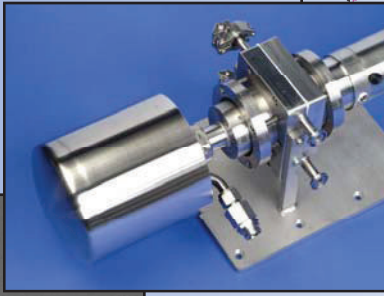
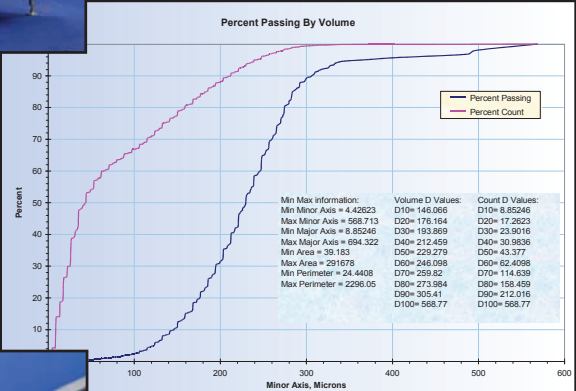
# PARTICLE SIZING



- Particle distribution by major axis, minor axis, diameter, area, & perimeter
- Shape Analysis
- Output to OPC or 4-20mA
- Visual verification of process



Canty's particle sizing units use a vision based sensor to obtain two dimensional images that are analyzed by our Canty Vision software to obtain particle size measurement in both the laboratory and online. Along with particle size, color and shape analysis can also be determined with Canty's particle sizing units. Whether the particles are solid or liquid, Canty has a particle sizing option that will suit a wide variety of applications. With so many options available, Canty enables companies to increase productivity and product integrity in any environment.



- Real time size, shape, and color analysis
- ONLINE and LAB units available
- Ethernet Control
- Record images for later analysis

# PARTICLE SIZING



## SOLIDS - LABORATORY

The Canty SolidSizer™ series uses a vision-based sensor used with the Canty Vector software to obtain dry particle size measurement in a laboratory environment. Canty uses two dimensional analyze for solids as small as **10 microns** to determine it's size, shape, and color.



SOLIDSizer™ TS (TA8748-1)

### SolidSizer™ TS Advantages:

- Ability to analyze particles in free fall and on a horizontal plain in one machine. This allows for **both Particle Size, Shape and Color Analysis** in one system!
- Utilizes a **Tilt System** to allow for a consistent particle arrangement to the camera system
- Adjustable lens magnification (sub micron through boulders-no upper size limit)
- Fiber optic backlighting for true shape illumination along with front lighting for color detection
- Optional light filters available for wavelength sensitive materials
- Particle distribution by major, minor diameter, area, perimeter available with Canty Vector System
- Remote processor control of system settings



SOLIDSizer™ LABPLUS V2 WITH AUTOMATED ETHERNET CONTROL (TA10142-1)

### The SolidSizer™ Advantages:

- Real time **size, shape, and color analysis**
- Particle distribution by major, minor diameter, area, perimeter, available with Canty Vector System
- Options include Ethernet controlled zoom/focus, material flow, and camera positioning, which allow for repeatable sample results between setting changes
- Variable magnification lens for analysis of different size samples
- A high output light source with uniform light field to display silhouette images of opaque particles
- A contained vibratory feeder to present sample material to the camera / lights in free fall
- Ability to view real time data and images and store images for further analysis
- Settings used for each sample can be saved for repeatability
- The ability to measure both particle size and color speck



LAB SOLIDSizer™ (TA9553-1)



LAB SOLIDSizer™ WITH COLOR ANALYSIS (TA10612-1)

# PARTICLE SIZING

## SOLIDS - ONLINE ANALYSIS



The Canty SolidSizer™ has evolved into a robust particle sizing unit used for particle sizing ranges as small as 10 microns and up to 9". With Canty, particle sizing analysis occurs in real time with two dimensional imaging to determine the products size, shape, and color. Also, images and video of the product can be stored for later retrieval and evaluation with our CANTYVISIONCLIENT™ software package. These features produce an ideal particle sizing system that can benefit a multitude of industries.



ROCKSIZER™ (TA9308-1)



WEATHER PROOF SOLIDSIZER™

### The RockSizer™ Advantages:

- Designed for the mining industry to withstand the harsh mining industry
- Rugged, Skid Mounted Frame
- Particle Distribution by Major, Minor Diameter, Area, Perimeter Available with the Canty Vector System
- Real-time, On-line Particle Size Analysis
- Dual Fiber Optic Backlighting for True Shape Illumination
- Easy, Rapid System Configuration

### The WP SolidSizer™ Advantages:

- Hardened SolidSizer™ for use in harsh industrial environments
- Real time size, shape, and color analysis
- Particle distribution by major, minor diameter, area, perimeter, available with Canty Vector System
- Variable magnification lens for analysis of different size samples
- A high output light source with uniform light field to display silhouette images of opaque particles
- A contained vibratory feeder to present sample material to the camera / lights in free fall
- Ability to view real time data and images and store images for further analysis
- Settings used for each sample can be saved for repeatability
- The ability to measure both particle size and color speck

### SolidSizer™ Applications:

Food  
Coffee  
Cereals  
Candies  
Detergents  
Pharmaceutical  
Powders  
Capsules  
Mining  
Aggregates  
Crusher Control  
Iron Ore Pellets  
Wood chip  
Plastics  
Agricultural Products  
Many, Many More!

# PARTICLE SIZING



## LIQUIDS - LABORATORY

Canty offers many systems for laboratory particle sizing and has been engineered to offer the user a means by which a liquid is analyzed while under varying pressures, temperatures and flow rates. The Microflow™, Macroflow™, and the Canty Glass Reactor offer sample or continuous, microscopic, non-destructive viewing and provides particle size analysis, **ranges from 1 micron and up**, with two dimensional results when used in conjunction with the CantyVisionClient™ Software.



MACROFLOW™ (TA10491-100)



MICROFLOW™ (TA9309-1)

### MacroFlow™ Advantages:

- Particle Size, Shape and Distribution with Real Time Analysis
- Fused Glass Pressure Barrier Standard
- Rated 150 PSI @ 500 Deg. F., Options Through 6,000 PSI
- On-line or Lab Plus (remote control)
- Seamless Design. Unit can be Orientated Horizontal or Vertical
- In-Line Dilution Port
- Instantaneous Mixing Port
- Regulated Temperature Option
- Bypass Loop Option Available for Flow Control
- ¾ Inch Sanitary Connections Standard



CANTY LAB REACTOR

### MicroFlow™ Advantages:

- Particle Size, Shape and Distribution with Real Time Analysis
- Variable magnification lens for analysis of different size samples
- A high output light source with uniform light field to display silhouette images of opaque particles
- Variable flow gap spacing to obtain optimal image for particle sizing
- Ability to view real time data and images and store images for further analysis
- Fuseview™ window as the product contact barrier
- Rated 150 PSI @ 500 Deg. F., Options through 6,000 PSI.
- On-Line or Lab Plus (remote control)
- Seamless Design. Unit Can Be Orientated Horizontal or Vertical
- On-Line Dilution Port
- Instantaneous Mixing Port
- Regulated Temperature Option
- Bypass Loop Option Available for Flow Control
- Sanitary Connections Standard

### Canty Lab Reactor Advantages:

- Real-time Crystal Size Analysis
- Crystal Distribution by Major & Minor Diameters, Area & Perimeter available with Vector System
- Crystal Size & Shape
- Crystal Count & Density
- Detection of Seeding Problems
- Uniform back-lighting for true shape illumination
- Standard Ethernet Control for Canty Vector System
- Integrated Agitation System with Teflon® Impeller
- Fused Glass Seal from Process
- Drainable Reactor Vessel by means of Switch

All registered trademarks are the property of their respective owners.

# PARTICLE SIZING



## LIQUIDS - ONLINE ANALYSIS

Canty CrystalScope™, Canty Inline Particle Sizing System, and Online Reactor system is a vision based system for **online** monitoring particle size in real time. These online systems includes a high speed camera with adjustable shutter speed, combining a lens configuration that offers dynamic Ethernet controlled calibration for magnification and focus settings. Whether it be particle analysis in a pipeline or in a crystallization reactor, Canty is able to return real time measurements of **particle size and shape**.



Canty Inline Particle Sizing



CrystalScope™ (TA10493-100)

### Canty Inline Particle Sizing Advantages:

- System includes adjustable flow cell with back lighting, and camera assembly to create an optimal online particle sizing environment that can be connected to a multitude of pipelines
- 30 micron-4.8 mm Particle Size Options
- Provides Both A Real Time, In-Line Measurement And A Continuous Real Time View Of The Product
- Various Process Connection Sizes Available (Flanged, Tri-Clamp ® , TS ® Swagelok)
- Fully Cleanable Unit
- High Throughput
- Available In Both WP, IP, Explosion Proof and Flame Proof Packages
- Digital Video Storage to Customer PC

All registered trademarks are the property of their respective owners.

### CrystalScope™ Advantages:

- Real Time Crystal Size Analysis
- Crystal Distribution By Major, Minor Diameter, Area, Perimeter Available with Vector System.
- Crystal Size & Shape
- Crystal Count
- Density Of Crystals
- Detection Of Seeding Problems
- Automated Temperature & Vacuum Controls During Crystal Growth
- Increased Efficiency During Filtration
- Standard Ethernet Control From Canty Vector System
- Uniform Backlighting For True Shape Illumination
- Ethernet Controlled
- Fuseview™ Window, High Pressure/Temperature Seal From Process
- Various Outputs, 4-20mA, OPC Interface, Modbus, etc ...



For more online analysis also look at IMMERSION TURBIDITY/COLOR ANALYSIS/PERCENT SOLIDS ANALYZER

### Liquid Particle Sizing Applications:

Crystallization  
Polymer Beads  
Food  
Oil Applications  
Water Analysis  
Sand and Water  
Drilling Mud  
Printing Toner Process Control  
Mining Slurry

