

CANTY

PROCESS TECHNOLOGY

QUICKFILLVIEWPORT™ Applications Sheet



HOW IT WORKS

The Canty QUICKPORT™ is a patented, safe, quick opening closure for process vessels. Originally used in the offshore diving industry as a transfer lock on decompression chambers. QUICKPORTS™ are used with no additional interlock by various non-industrial personnel in applications where any operational failure would be fatal.

The zero leak design has been proven through a combination of air and liquid submergence testing. This cycles the QUICKPORT™ through external pressure, no pressure and ultra high internal pressure leak testing where a constant o-ring seal was maintained.

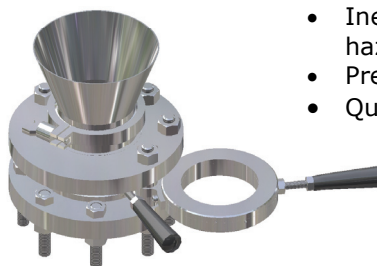
FEATURES

- No Bolting or Torquing required
- Zero Leak Closure
- Full Vacuum
- ANSI 150 lb. and 300 lb. Mount
- DIN 10 bar and 16 bar mount
- 316L Stainless Steel, Alloy C, Hastelloy® C276 or equal, or Hastelloy® C-22® or equal construction.
- Meets ASME, BS5500, and EC codes (see interlock options) for quick opening closures.
- Code material test reports available

APPLICATIONS

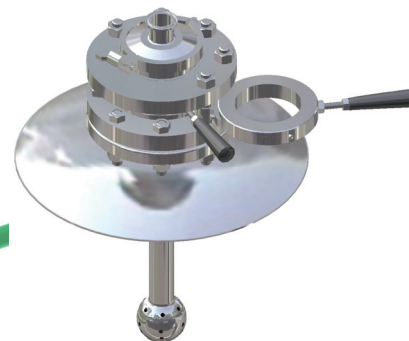
- Vessel Charging
- Vessel Sampling
- Powder Addition
- Test Vessel
- Quick Change Filter
- Powder Transfer System
- ILC Dover - Dover Pac®
- Process View Port
- Sprayball Attachment

Vessel charging with clamp on or drop in funnel

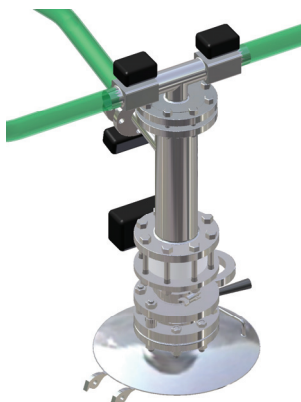


- Inexpensive option for non-hazardous chemical addition
- Prevents spills
- Quick to install

Quickly attach a sprayball without the need for an additional nozzle



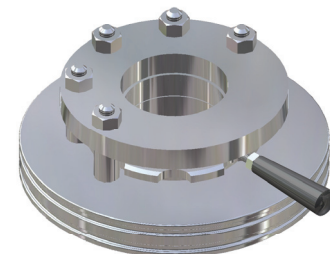
Vessel charging with PTS system



- Maximizes nozzle use:
- Sight glass
- Charge port
- Spray nozzle port
- Light port

Vessel charging and sampling with Dover Pac® charging system

- Easy to use
- Full pressure and vacuum rated
- Easily cleaned
- Minimizes space requirements
- Allows the use of standard



CANTY

JM Canty Inc | Buffalo, NY USA
JM Canty Intl Ltd | Dublin, Ireland

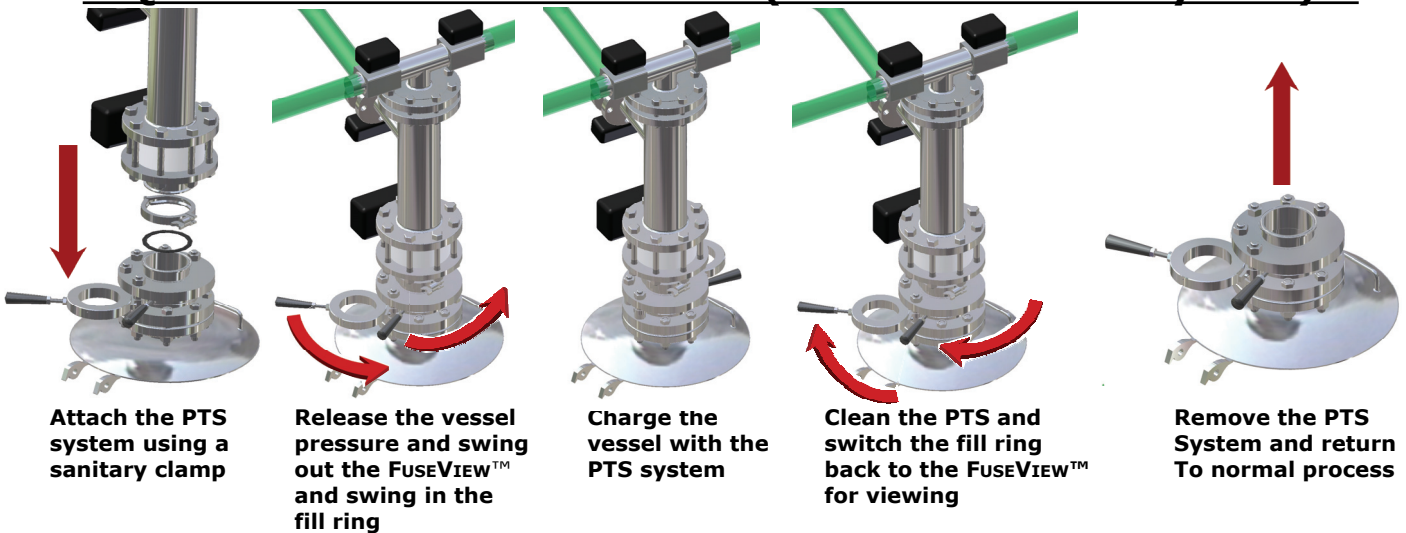
Ph: (716) 625 4227
Ph: + 353 (01) 882 9621

Fax: (716) 625 4228
Fax: +353 (01) 882 9622

www.jmcanty.com

Document P/N: TA10782-1 Rev 3

QUICKFILLPORT™ Used with PTS(Powder Transfer System)



Attach the PTS system using a sanitary clamp

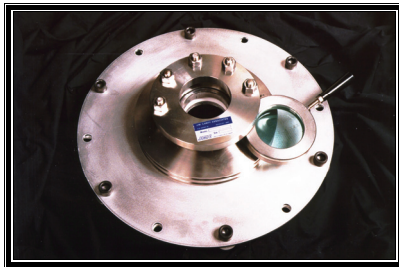
Release the vessel pressure and swing out the FUSEVIEW™ and swing in the fill ring

Charge the vessel with the PTS system

Clean the PTS and switch the fill ring back to the FUSEVIEW™ for viewing

Remove the PTS System and return To normal process

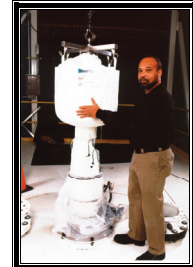
QUICKFILLPORT™ Used with a Dover Pac® Charging System



QUICKPORT™ adapter pad accepts Dover Pac® glove bag and band clamps



Attach the glove bag to the adapter Pad and the Dover Pac® system



System is ready For charging

Ordering Information

HOW TO ORDER: Select the appropriate symbols and build a part number as shown:

EXAMPLE:

Q - - - - - **1**

MODEL:
 E = Quick Fill View Port
 G = Quick View Port™ to accept PTS
 H = Quick View Port™ to accept Dover PAC®

SIZE:

ANSI	DIN
1 = 2" NOZZLE MOUNT	A = 50mm NOZZLE MOUNT
2 = 3" NOZZLE MOUNT	B = 80mm NOZZLE MOUNT
3 = 4" NOZZLE MOUNT	C = 100mm NOZZLE MOUNT
4 = 6" NOZZLE MOUNT	D = 150mm NOZZLE MOUNT
5 = 8" NOZZLE MOUNT	E = 200mm NOZZLE MOUNT
7 = 2" PAD MOUNT	F = 50mm PAD MOUNT
8 = 3" PAD MOUNT	G = 80mm PAD MOUNT
9 = 4" PAD MOUNT	H = 100mm PAD MOUNT
P = 6" PAD MOUNT	I = 150mm PAD MOUNT
Q = 8" PAD MOUNT	J = 200mm PAD MOUNT

PRESSURE:

ANSI	DIN
A = 150 psi	1 = 10 BAR
B = 300 psi	2 = 16 BAR

BASEPAD, SEAL RING, & FUSEVIEW™ MATERIAL (wetted):
 BBB = 316L Stainless Steel*
 DDC = Alloy C**
 DDD = Hastelloy® C276 or equal
 EEE = Hastelloy® C-22® or equal

LOCK OPTIONS:
 1 = Manual locking pin in retainer for 1/4" lock (standard)

SEAL RING OPTIONS:
 B = Self-Pressurized (Standard)
 C = Spray Ring

O-RING (wetted):
 1 = Buna [225°F / 107°C]
 2 = Viton® [400°F / 204°C]
 4 = Silicone [450°F / 232°C]
 8 = EPDM [300°F / 149°C]
 9 = Neoprene [250°F / 121°C]

FILL RING & EXTERNAL CONNECTION MATERIAL:
 (wetted when filling)(Tri-clamp® size is same as size)
 B = 316L Stainless Steel
 F = 316L with Tri-clamp®
 G = Hastelloy® C276 or equal with Tri-clamp®
 H = Hastelloy® C-22® with Tri-clamp®

*Canty reserves the right to upgrade the Fuseview™ to Hastelloy® C-family of alloys or equal at their own cost.

**Basepad is Hastelloy® C276 or equal, Fuseview™ and seal ring are Alloy C.



JM Canty Inc | Buffalo, NY USA
 JM Canty Intl Ltd | Dublin, Ireland

Ph: (716) 625 4227
 Ph: + 353 (01) 882 9621

Fax: (716) 625 4228
 Fax: +353 (01) 882 9622