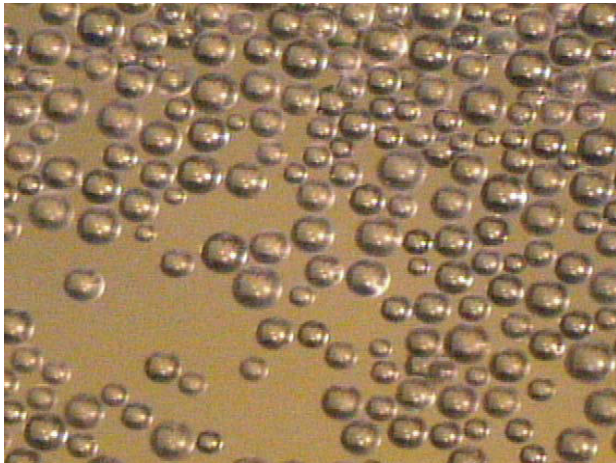


CANTY

PROCESS TECHNOLOGY

EXPANDED POLYSTYRENE SIZING



APPLICATIONS

- Styrene Bead Growth Monitoring and Control
- On-line size measurement permits process control for improved yield
- On-line Process Monitoring generates alarms on upset

BENEFITS

- Process image display provides visual verification during process
- Real-Time On-line Process control

HOW IT WORKS

The JM Canty Expanded Polystyrene Sizing system is a vision-based measurement system used with a Canty Vector for on-line particle size analysis. The system includes a B&W camera with variable magnification lens, integral light source with flexible fiber optic light guides to view the product particles being formed in the process environment. The camera video is provided to the Canty Vector System for particle size analysis.

CANTY VECTOR

- Particle Sizing System is powered by a Microsoft Windows NT based image analysis system
- Analyzes real-time video of your particles using a Canty Vision Camera System
- Standard video format – can be recorded on any VCR or saved to disk. Digital video options
- Industrial microprocessor
- Multiple software process control packages
- 8 Channel 4-20 mA output (available for the rack mount computer only)
- Up to four video inputs standard (available for the rack mount computer only)
- Ethernet network interface standard
- Modem for factory support, file sharing

FEATURES

- Fiber optic lighting for true shape illumination
- Fused Glass, High Pressure / Temperature Seal From Process
- CCD Based High-Speed Imaging Device
- NEMA 4, Explosion proof / Flameproof Ratings are Available

SPECIFICATIONS

Ratings: Explosion proof (U.S.) Class I, Div 1, Groups B,C&D, Flame proof (Europe) EEx d IIC T6 models are available. Wetted Material. Stainless Steel or Hastelloy®
Weather proof - NEMA 4, IP 66
Shutter Speed: Variable up to 1/100,000
Power : 120 VAC , 60 Hz (230VAC / 50 Hz)
Approvals: CE marking for Europe (CCIR,PAL systems)
Video Format: Available models include:
EIA (B&W - U.S. format)
NTSC (Color - U.S. format)
CCIR (B&W - European format)
PAL - (Color - European format)

CANTY

JM Canty Inc | Buffalo, NY USA
JM Canty Intl Ltd | Dublin, Ireland

Ph: (716) 625 4227
Ph: + 353 (01) 882 9621

Fax: (716) 625 4228
Fax: +353 (01) 882 9622

www.jmcanty.com

Document P/N: TA8987-1 Rev.2

All registered trademarks are the property of their respective owners.

Ordering Information

How To Order:

Equipment: The Vector image processing unit comes complete with software and technical start up service so your operators can learn and operate the system effectively.

The system includes a Cauty camera/light unit with insertion tip and micro lens for particle viewing. This can be provided in a 50" insertion for retrofit through the reactor top, or an 8" insertion unit that would be mounted through the reactor side wall.

VCB3411-PS Vector (see sales sheet TA8305-1)

Windows™ based Rack Mount Cauty Vector image analyzer with 4 camera input, 8 channel 4-20mA output, CD Rewritable drive for data backup, modem for factory support and video capture feature for recording live process view.

EPS-8S-EXP Process Microscope Camera (see sales sheet TA7739-1)

Stainless steel wetted, 8" insertion camera to view into process fluid. Features include high speed digital camera, fiber-optic lighting, fused glass lens ready to mount to a 4"-150# nozzle.

Process Microscope Camera



Vector - Rack Mount Computer



CANTY

JM Cauty Inc

Buffalo, NY USA

Ph: (716) 625 4227

Fax: (716) 625 4228

JM Cauty Intl Ltd

Dublin, Ireland

Ph: + 353 (01) 882 9621

Fax: +353 (01) 882 9622

www.jmcanty.com

Document P/N: TA8987-1 Rev. 2

All registered trademarks are the property of their respective owners.