

# CANTY

PROCESS TECHNOLOGY

## 3-D ROCKSIZER™ ONLINE SIZING SYSTEM



### THE CANTY ADVANTAGE

The control of rock and aggregate size is critical, as crushing mills tend to have a high rate of out of spec production. Sizing the crushed rock and detecting when it is not the optimum size saves a significant amount of time and money by avoiding product return and rework. The JM Canty RockSizer™ allows quick sizing of aggregate to allow for real time adjustments to the process and to keep the output in spec. The RockSizer™ is a vision-based measurement system used with a Canty Vector for aggregate, determining particle size, shape, and distribution thereby eliminating the need for sieve analysis.

The RockSizer™ includes two B&W cameras, dual lighting systems, a hopper and gate system, and a vibratory feeder to present the sample material to the cameras and lights in free fall. The RockSizer™ electronics are packaged in a rugged, weather proof, skid mounted frame designed to meet the demanding requirements of many industries, including the aggregate industry. The camera video is provided to the Canty Vector System for quick and precise particle size analysis. The vector output matches sieve and screen data directly.

### FEATURES

- Outdoor Lab Analyzer
- Particle Distribution by Major, Minor Diameter, Area, Perimeter Available with the Canty Vector System
- Real-time, On-line Particle Size Analysis
- Dual Backlighting for True Shape Illumination
- Easy, Rapid System Configuration
- Rugged, Skid Mounted Frame
- Large Hopper to feed the product into the RockSizer™
- Gate system allows for precise feed control of the product
- Dual camera systems to allow for twice the feed rate of single camera system

### APPLICATIONS

- Aggregate
- Crusher Control
- Iron Ore Pellets
- Milling Controls
- Potato & Agricultural Product
- Screen Break
- Screen Blinding
- Wood chip
- Many, Many More

### SPECIFICATIONS

- Aggregate: 1/10" – 2" Particle/Object.  
50-6000 micron, .75"-9" Models also available. Consult Factory.
- Rating: NEMA 4 Weather proof
- Power: 120V AC, 60Hz, (230V AC, 50Hz available) Single Phase, 900W
- Dimensions: Approx. 6 ft. (L) X 3 ft. (W) X 5 ft. (H)
- Weight: Approx. 1250 lbs

### BENEFITS

- Reduces Lab Screening Labor
- Output Matches Sieve / Screen Data - Direct Replacement
- Fast Pay Back

**CANTY**

JM Canty Inc | Buffalo, NY USA  
JM Canty Intl Ltd | Dublin, Ireland

Ph: (716) 625 4227  
Ph: + 353 (01) 882 9621

Fax: (716) 625 4228  
Fax: +353 (01) 882 9622

[www.jmcanty.com](http://www.jmcanty.com)

Document P/N: TA9308-1 Rev 7

## Ordering Information

HOW TO ORDER: Select the appropriate symbols and build a part number as shown:

**EXAMPLE:**

**SR - K 5 3 1**

STYLE SELECTION  
R = RockSizer™

VIDEO SYSTEM FORMAT (B&W)  
A = EIA 640 x 480 (North American Standard)  
C = CCIR 768 x 576 (European Standard)  
F = Ethernet 659 x 493  
G = Gigabit Ethernet 1600 x 1200

ENVIRONMENTAL RATING  
2 - Weatherproof  
3 - Explosionproof

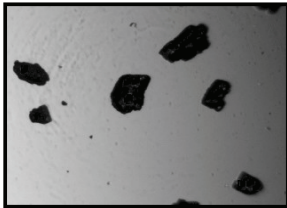
SYSTEM ILLUMINATION  
K = Backlighting

ACCESSORIES  
1 = No accessories

TRAY MATERIAL  
3 = Steel Tray

INPUT POWER  
1 = 120 VAC 60 Hz  
2 = 230 VAC 50 Hz

LENS  
5 = Fixed Lens



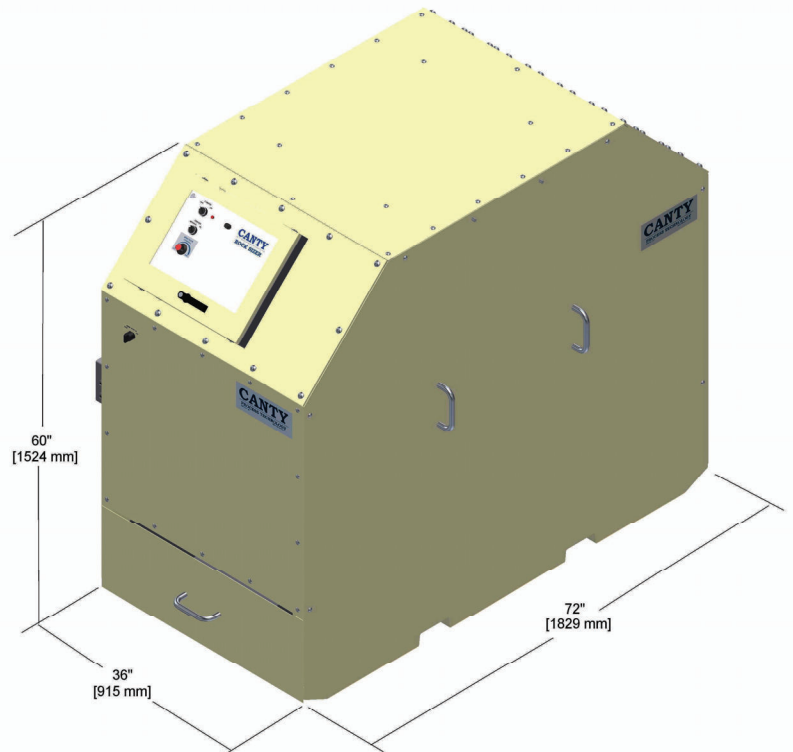
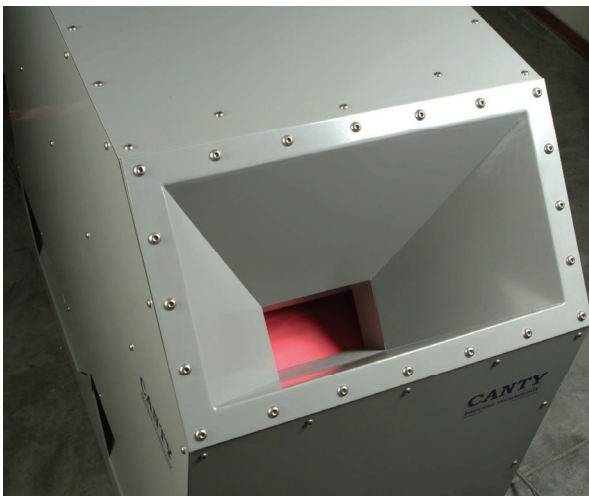
Live Image



Digitizer Image



Sizing Image



**CANTY**

JM Canty Inc | Buffalo, NY USA  
JM Canty Intl Ltd | Dublin, Ireland

Ph: (716) 625 4227  
Ph: + 353 (01) 882 9621

Fax: (716) 625 4228  
Fax: +353 (01) 882 9622