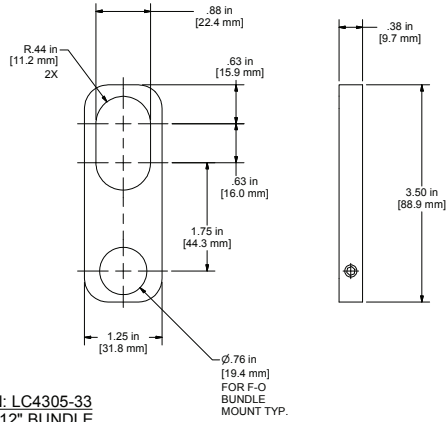
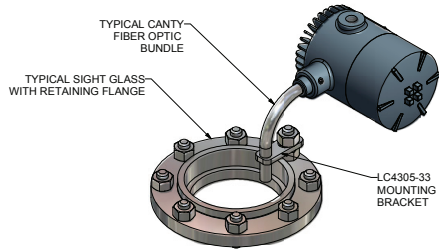
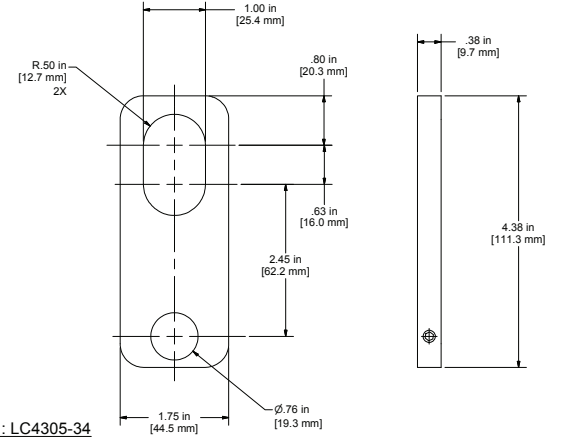
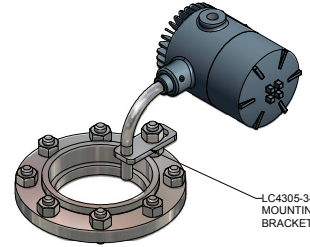


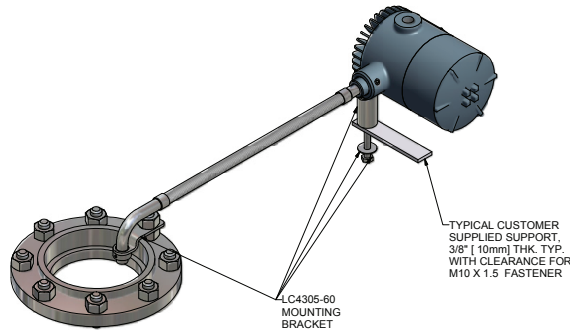
INDUSTRIAL SIGHT GLASS BRACKETS



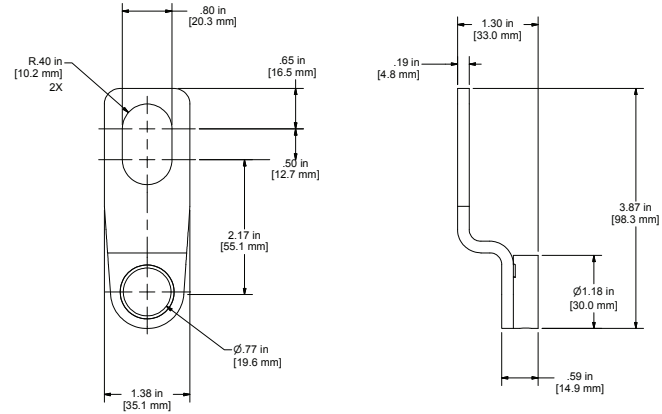
BRACKET P/N: LC4305-33
SELECT FOR 12" BUNDLE
DIRECT FLANGE MOUNT
 2" - 8" 150# ANSI
 2" - 4" 300# ANSI
 DN 50 - 200 PN 10
 DN 50 - 200 PN 16
 DN 50 - 100 PN 25
 DN 50 - 100 PN 40



BRACKET P/N: LC4305-34
SELECT FOR 12" BUNDLE
DIRECT FLANGE MOUNT
 10" 150# ANSI
 6"-8" 300# ANSI
 DN 250 PN 10
 DN 250 PN 16
 DN 125 - 200 PN 25
 DN 125 - 150 PN 40



BRACKET P/N: LC4305-60
SELECT FOR 24" AND LONGER BUNDLES
LIGHT IS MOUNTED REMOTELY
 2" - 8" 150# ANSI
 2" - 4" 300# ANSI
 DN 50 - 250 PN 10
 DN 50 - 250 PN 16
 DN 50 - 150 PN 25
 DN 50 - 150 PN 40



<div>NOTICE</div> <div>THIS DRAWING IS THE PROPERTY OF J.M. CANTY AND MUST BE RETURNED WITHOUT REPRODUCTION OR DUPLICATION, AT ANY TIME UPON REQUEST, BUT IN ANY EVENT AS SOON AS IT HAS SERVED THE PURPOSE FOR WHICH IT WAS FURNISHED, WHILE IN THE POSSESSION OF THE RECIPIENT, IT MUST BE PROPERLY SAFEGUARDED AGAINST DISCLOSURE TO ANYONE EXCEPT THOSE EMPLOYEES WHO REQUIRE IT FOR WORK OR JOB. THE RECIPIENT MUST KEEP CONFIDENTIAL AND REQUIRE HIS (HER) EMPLOYEES TO KEEP CONFIDENTIAL THE INFORMATION CONTAINED HERE ON.</div>	<div>IMPORTANT FOR THE REQUIRED MANUFACTURING SPECIFICATIONS SEE DOCUMENT #A4955</div> <div>NOTE: FAILURE TO RECEIVE DOCUMENT DOES NOT WAIVE VENDOR RESPONSIBILITY</div>	DRAWN BY	DATE	<div>J.M. CANTY INC. 6100 DONNER RD. BUFFALO, N.Y. 14294 U.S.A.</div> <div>CANTY WWW.JMCANTY.COM</div> <div>J.M. CANTY INTL. LTD. BALLYCOOLIN BUS. PK. BLANCHARDSTOWN DUBLIN 15, IRELAND</div>
		APPROVAL	DATE	
		ENGINEERING ANALYSIS	DATE	
		CURRENT	DATE	
		MFG. APPROVAL	DATE	
		PENDING	DATE	
		QUALITY CONTROL	DATE	
		I.O.A.	DATE	
TITLE				INDUSTRIAL SIGHT GLASS FLEX BUNDLE MOUNTING BRACKET SALES DETAIL
SIZE/REVISION				
D 1				FILE NAME
				TD10811-100
SCALE				SHEET 1 OF 1
AS NOTED				