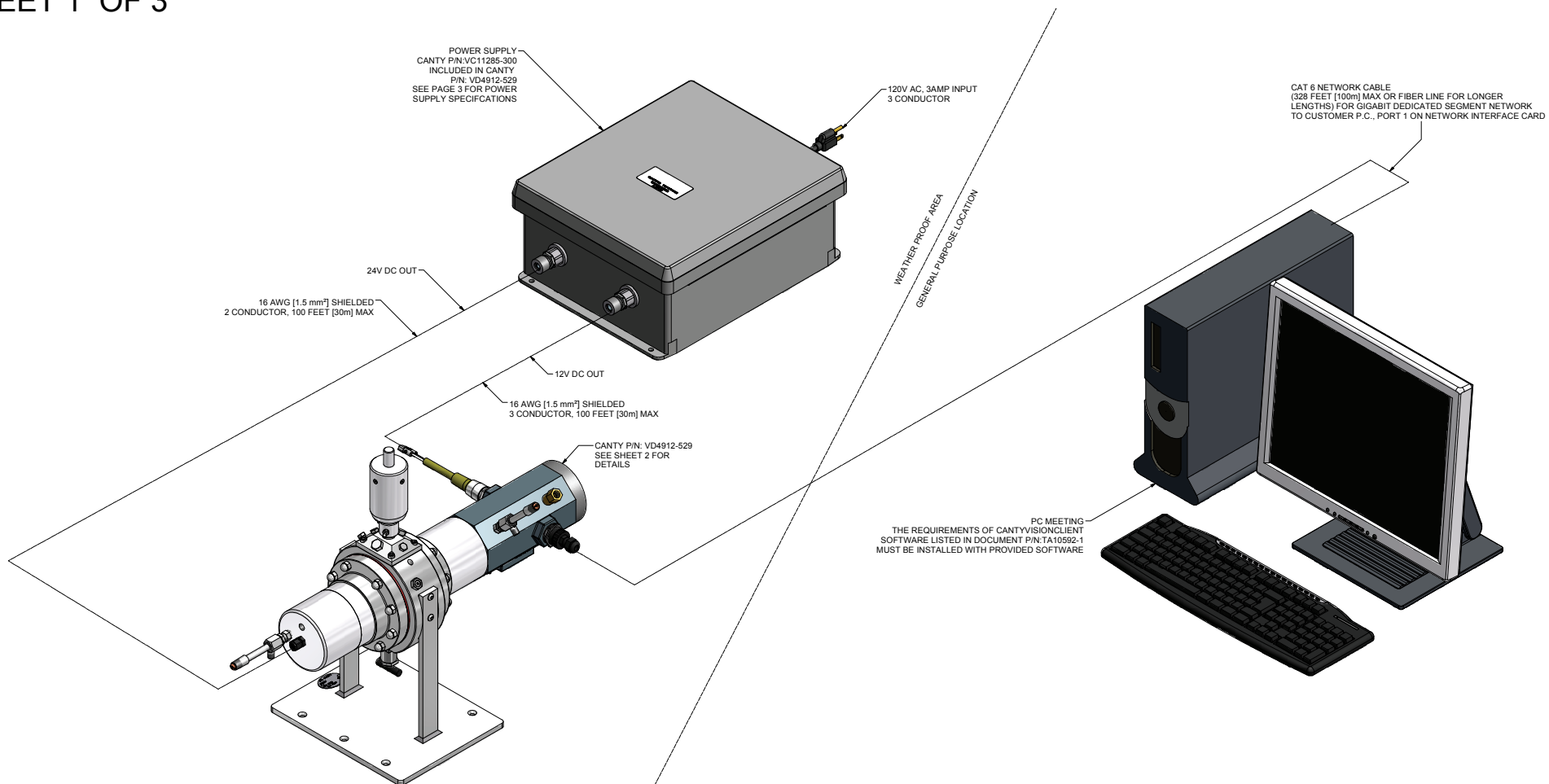


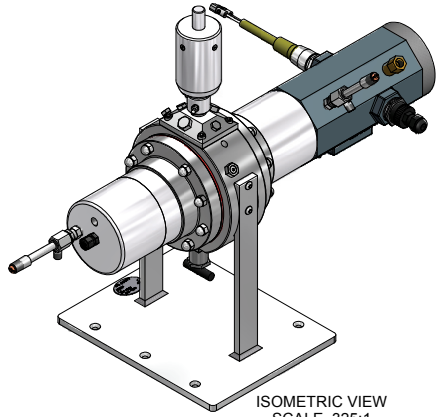
SHEET 1 OF 3



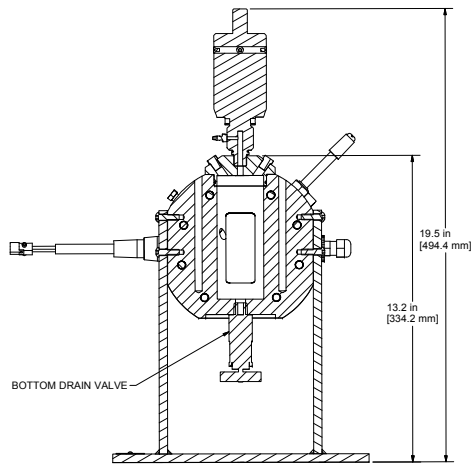
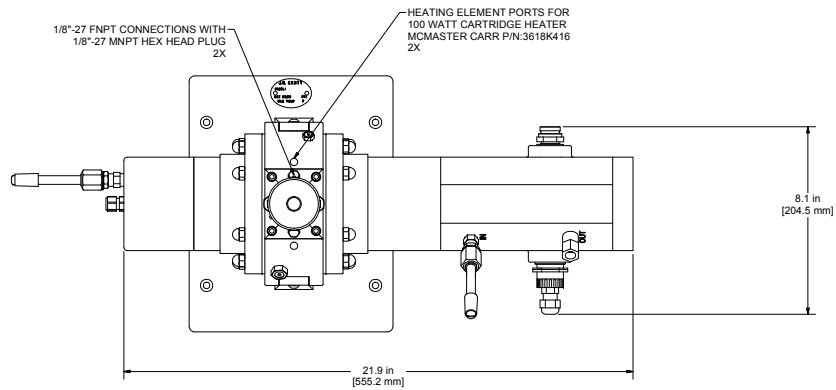
- NOTES:**
1. REFERENCE TOP LEVEL P/N VD4912-529
 2. SYSTEM DESIGNED FOR 300 PSI [21 BAR] AT 450°F [233°C]
 3. WETTED MATERIALS: 316L S.S., C276, SILICONE GASKETS AND ORING SEALS, BOROPLUS GLASS
 4. NON WETTED STRUCTURAL MATERIALS: 304S.S. HARDWARE, AND 316 S.S.
 5. NON WETTED PROCESS ENCLOSURES ARE ALUMINUM WITH ANODIZED FINISH. ENCLOSURE ORINGS ARE SILICONE
 6. ALL WIRING AND CONNECTORS ARE SUPPLIED BY CANTY AND MUST BE COMPLETED IN ACCORDANCE WITH APPLICABLE REGULATIONS
 7. SYSTEM INCLUDES CANTYVISIONCLIENT SOFTWARE TO BE INSTALLED ON CUSTOMER PROVIDED COMPUTER
 8. GIGABIT ETHERNET CAMERA HAS A RJ45 JACK, CANTY SUPPLIES CAT6 CABLING WITH ENDS AS REQUIRED BETWEEN CAMERA AND COMPUTER SYSTEM WITH CANTYVISIONCLIENT SOFTWARE INSTALLED
 9. SEE ADDITIONAL SHEETS FOR DIMENSIONAL INFORMATION ON AUXILIARY EQUIPMENT

<p>NOTICE</p> <p>THIS DRAWING IS THE PROPERTY OF J.M. CANTY AND MUST BE RETURNED WITHOUT REPRODUCTION OR DUPLICATION AT ANY TIME UPON REQUEST. BUT IN ANY EVENT AS SOON AS IT HAS SERVED THE PURPOSE FOR WHICH IT WAS FURNISHED, WHILE IN THE POSSESSION OF THE RECIPIENT, IT MUST BE PROPERLY SAFEGUARDED AGAINST DISCLOSURE TO ANYONE EXCEPT THOSE EMPLOYEES WHO REQUIRE IT FOR WORK OR JOB. THE RECIPIENT MUST KEEP CONFIDENTIAL AND REQUIRE HIS (HER) EMPLOYEES TO KEEP CONFIDENTIAL THE INFORMATION CONTAINED HERE ON.</p>	<p>IMPORTANT FOR THE REQUIRED MANUFACTURING SPECIFICATIONS SEE DOCUMENT #A4955</p>	<p>DRAWN BY DEJ</p>	<p>DATE 11/7/2012</p>	<p>J.M. CANTY INC. 6100 DONNER RD. BUFFALO, N.Y. 14204 U.S.A.</p>	<p>CANTY WWW.JMCANTY.COM</p>	<p>J.M. CANTY INTL. LTD. BALLYCOOLIN BUS. PK. BLANCHARDSTOWN DUBLIN 15, IRELAND</p>
	<p>APPROVAL DEJ</p>	<p>DATE 1/25/2013</p>	<p>ENGINEERING ANALYSIS DATE</p>		<p>TITLE STANDARD INTERFACE SEPARATION SYSTEM, SALES DRAWING</p>	
	<p>NOTE: FAILURE TO RECEIVE DOCUMENT DOES NOT WAIVE VENDOR RESPONSIBILITY</p>	<p>CURRENT MFG. APPROVAL PENDING</p>	<p>DATE</p>	<p>REVISION 0</p>	<p>FILE NAME VC11615-100</p>	<p>SCALE AS NOTED</p>
	<p>QUALITY CONTROL VJS</p>	<p>DATE</p>	<p>SIZE D</p>	<p>SHEET 1 OF 3</p>	<p>SIZE D</p>	<p>3</p>

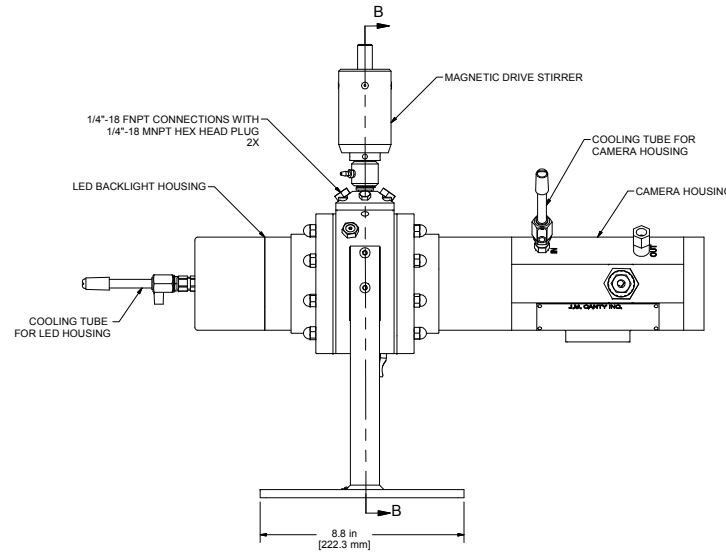
SHEET 2 OF 3



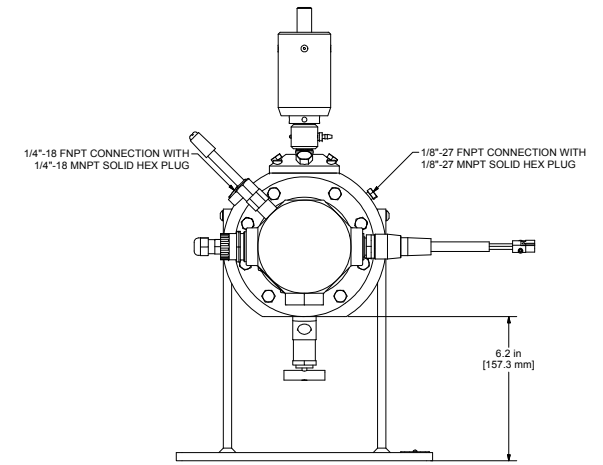
ISOMETRIC VIEW
SCALE .325:1



SECTION B-B
SCALE .375:1



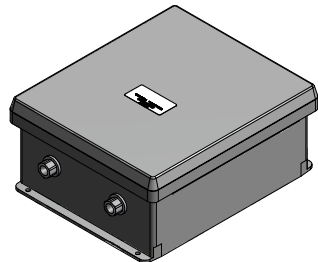
FRONT VIEW
SCALE .375:1



- NOTES:**
1. SYSTEM DESIGNED FOR 300 PSI [21 BAR] AT 450°F [233°C]
 2. APPROXIMATE PART WEIGHT IS 61 lb [27.7 kg]
 3. SYSTEM CAN HOLD 250 ml OF FLUID.
 3. ALL DIMENSIONS LISTED ARE THEORETICAL AND MAY VARY SLIGHTLY DUE TO MANUFACTURING TOLERANCES AND ASSEMBLY.

<p>IMPORTANT FOR THE REQUIRED MANUFACTURING SPECIFICATIONS SEE DOCUMENT #A4955</p> <p>NOTE: FAILURE TO RECEIVE DOCUMENT DOES NOT WAIVE VENDOR RESPONSIBILITY</p>	<p>ENGINEERING ANALYSIS</p> <p>DATE 11/7/2012</p>	<p>J.M. CANTY INC. 6100 DONNER RD. BUFFALO, N.Y. 14204 U.S.A.</p> <p>CANTY WWW.JMCANTY.COM</p>	<p>J.M. CANTY INTL. LTD. BALLYCOOLIN BUS. PK. BLANCHARDSTOWN DUBLIN 15, IRELAND</p>	
	<p>APPROVAL</p> <p>DATE 1/25/2013</p>			
	<p>REVISION</p> <p>0</p>			<p>FILE NAME</p> <p>VC11615-100</p>
	<p>SCALE AS NOTED</p> <p>SIZE D</p>			<p>SHEET 2 OF 3</p>

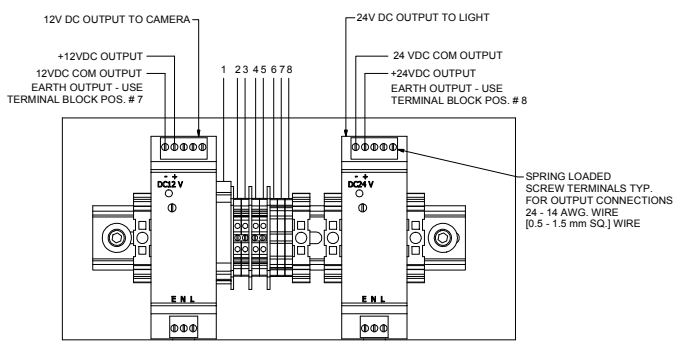
SHEET 3 OF 3



SCALE 1 / 4

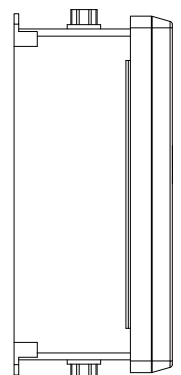
TERMINAL BLOCK WIRING	
TERMINAL BLOCK POSITION	FUNCTION
1	LIVE INPUT (FUSED)
2	RESERVED
3	RESERVED
4	NEUTRAL INPUT
5	RESERVED
6	EARTH INPUT
7	EARTH OUTPUT CAMERA
8	EARTH OUTPUT LIGHT

ALL REMAINING TERMINAL BLOCK POSITIONS ARE PREWIRED BY CANTY. NO AVAILABLE CONNECTIONS.

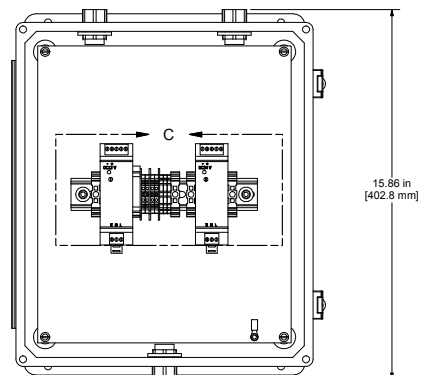


DETAIL C
SCALE 3 / 4

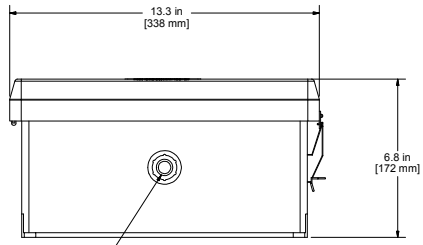
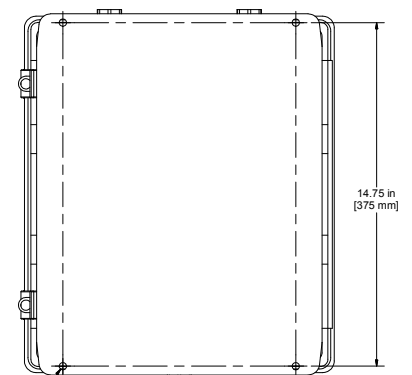
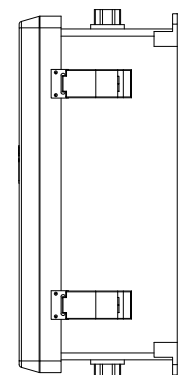
NOTES:
1. ENCLOSURE MUST BE MOUNTED ON A PROPERLY SUPPORTED VERTICAL STRUCTURE IN THE ORIENTATION SHOWN.



THIS SIDE UP



FRONT VIEW - COVER REMOVED
SCALE 3 / 8



1/2-14 NPT FEMALE WIRE INLET
3X

SPECIFICATIONS	
P/N	VC11285-300
MODEL	POWER SUPPLY, WP/IP, REGULATED 12V DC/24VDC
INPUT SPECIFICATIONS	100-240V AC, 50/60 Hz, 1A
OUTPUT SPECIFICATIONS	12 VDC, 1A MAX.(CAMERA), 24VDC 3.75A MAX. (LIGHT)
FEATURES	
- NEMA TYPE 4X / IP66	
- MAX. RECOMMENDED OUTPUT CABLE DISTANCE FOR ALL CONNECTIONS IS 100 FT. [30.5 m] WITH 16 AWG / 1.5mm ² MIN. SHIELDED WIRE.	

<p>NOTICE</p> <p>THIS DRAWING IS THE PROPERTY OF J.M. CANTY AND MUST BE RETURNED WITHOUT REPRODUCTION OR DUPLICATION AT ANY TIME UPON REQUEST. BUT IN ANY EVENT AS SOON AS IT HAS SERVED THE PURPOSE FOR WHICH IT WAS FURNISHED, WHILE IN THE POSSESSION OF THE RECIPIENT, IT MUST BE PROPERLY SAFEGUARDED AGAINST DISCLOSURE TO ANYONE EXCEPT THOSE EMPLOYEES WHO REQUIRE IT FOR WORK OR JOB. THE RECIPIENT MUST KEEP CONFIDENTIAL AND REQUIRE HIS (HER) EMPLOYEES TO KEEP CONFIDENTIAL THE INFORMATION CONTAINED HERE ON.</p>	<p>IMPORTANT FOR THE REQUIRED MANUFACTURING SPECIFICATIONS SEE DOCUMENT #44955</p> <p>NOTE: FAILURE TO RECEIVE DOCUMENT DOES NOT WAIVE VENDOR RESPONSIBILITY</p>	DRAWN BY DEJ	DATE 11/7/2012	J.M. CANTY INC. 6100 DONNER RD. BUFFALO, N.Y. 14204 U.S.A. WWW.JMCANTY.COM	<p>CANTY</p> <p>J.M. CANTY INTL. LTD. BALLYCOOLIN BUS. PK. BLANCHARDSTOWN DUBLIN 15, IRELAND</p>		
		APPROVAL DEJ	DATE 1/25/2013			TITLE STANDARD INTERFACE SEPARATION SYSTEM, SALES DRAWING	
		ENGINEERING ANALYSIS CURRENT	DATE			REVISION 0	FILE NAME VC11615-100
		MFG. APPROVAL PENDING	DATE			SCALE AS NOTED	SIZE D
QUALITY CONTROL VJS	DATE			SHEET 3 OF 3			