



Canty Process Technology

jmcanty.com



Introduction

Canty

Established in 1969, Canty first produced lighting for hyperbaric chambers. Canty has since evolved into a multifaceted company that produces products such as process lighting, sight glasses, closure systems, process cameras, and particle analyzing units.

The Canty Light

Hardware

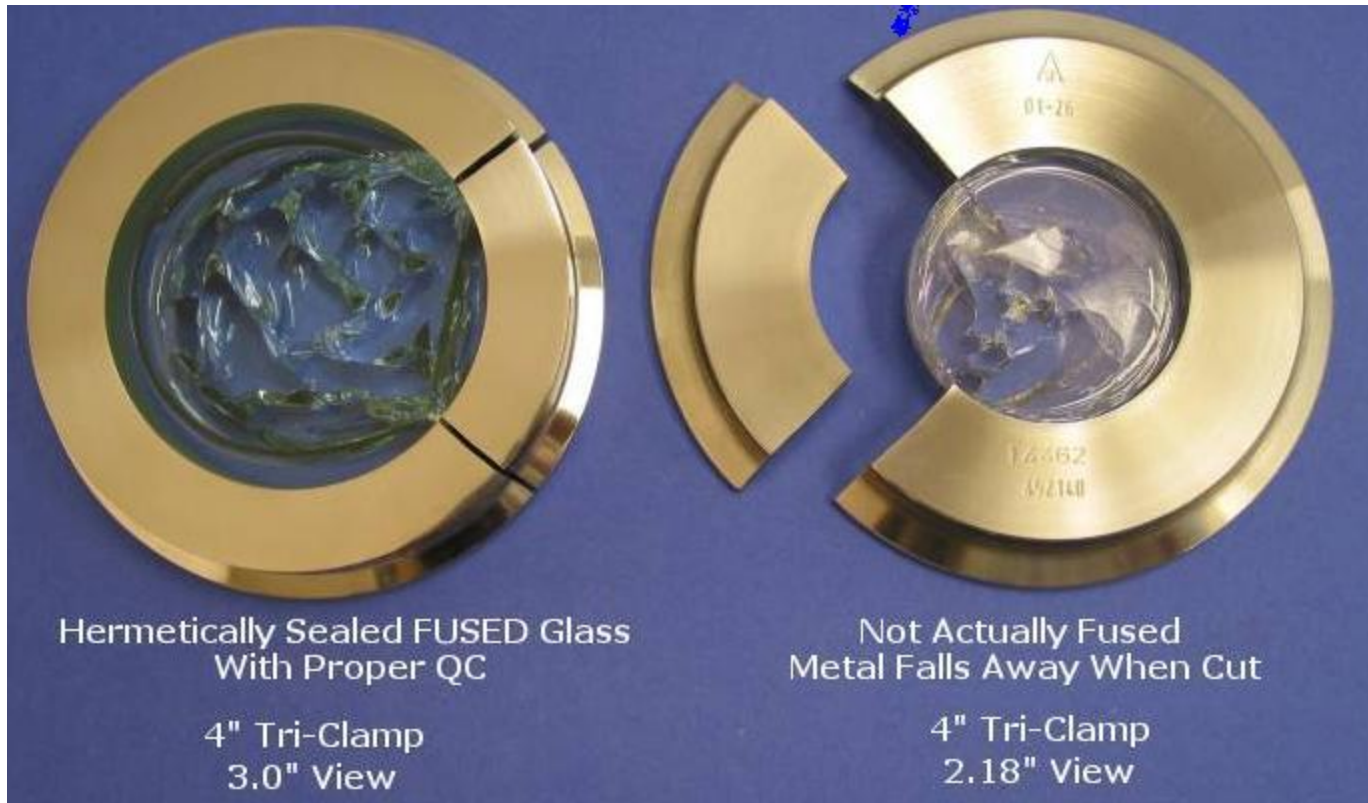


There are three keys to imaging technology. They are **LIGHTING**, **LIGHTING**, and **LIGHTING!**

The CANTY LIGHT

Canty Lights makes image microcopy possible! The reliability and uniformity of the Canty lighting system allows for each particle to be consistently measured. The interior of the flow cell is uniformly illuminated to allow analysis of the particles by the camera system.

Canty Fuseview



Fuseview

How it works



"TO MAKE A FUSEVIEW YOU BRING THE GLASS UP TO IT'S MOLTEN POINT WHERE IT FLOWS TO THE WALL OF THE METAL. AT THAT POINT THE GLASS FUSES OR BONDS TO THE METAL. THEN WE SLOWLY COOL THE FUSEVIEW UNTIL THE GLASS SOLIDIFIES. THE METAL HAS A HIGHER COEFFICIENT OF EXPANSION THAN THE GLASS AND THE METAL COMPRESSES ON THE GLASS. THIS SQUEEZING PRESTRESSES THE GLASS AND PUTS IT UNDER RADIAL COMPRESSION. GLASS IS STRONG IN COMPRESSION, BUT NOT TENSION AND SHEAR. WHEN THE FUSEVIEW IS PRESSURIZED THE GLASS BENDS AND RELIEVES THE COMPRESSION AND AVOIDS TENSION. THIS IS THE SAME AS IS DONE IN CONCRETE - IT IS PRESTRESSED IN COMPRESSION IN ORDER TO TAKE BENDING."

Canty Spray Ring



- Any Fluid
- Vortex Cleaning Action
- Insertion or Flush Mount
- Standard to 2500 PSI
- Various Materials
- Various Mounting Connections

Camera System

Hardware



Canty offers industrial hardened camera systems that feature Canty's patented Fuseview technology.

Canty also offers camera systems with Ethernet connectivity. The ability to have Ethernet connectivity to the camera creates flexibility compared to analog cameras and allows for network wide monitoring of the process.

High Temperature Insertion CCD Camera



- Color or Black & White
- NO Cooling Required under 2000°F
- Models up to 3000°F
- Quartz Lens Assembly
- Quartz Dust Shield
- Air for Cleaning
- Various Insertion Lengths
- Low Maintenance, NO water cooling or Retraction System

Laboratory Particle Analysis

Solids



Canty LabPlus SolidSizer

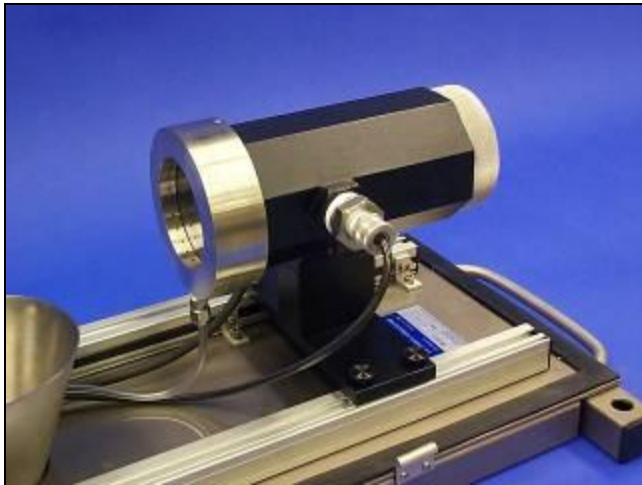


Canty TS SolidSizer

Canty Laboratory SolidSizers™ are vision-based analyzers for dry particle size measurement and speck detection in a laboratory environment. The SolidSizer™ includes a camera with shutter speed control, a variable magnification lens, a high output light source with uniform light field to display silhouette images of opaque particles, and an enclosed vibratory feeder to present sample material to the camera / lights in free fall. The sample images are digitally analyzed to obtain particle characteristics.

Online Particle Analysis

Solids

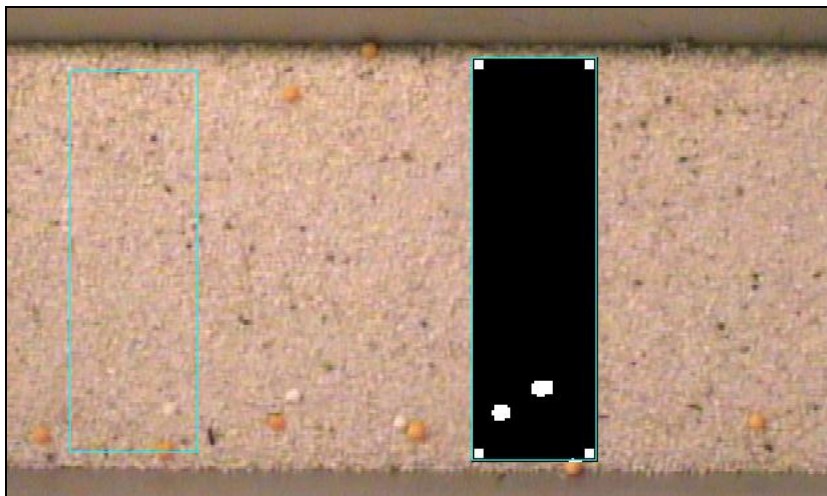


The Canty SolidSizer™ is a robust particle sizing unit used for sizing ranges as small as 10 microns, with models available for particles as large as 9" [22.9 cm]. With any Canty system, particle size analysis occurs in real time with two dimensional imaging to determine the products size, shape, and color. Images and video of the product can be stored for retrieval and evaluation with CantyVisionClient™ software , producing an ideal particle sizing system that can benefit a multitude of industries.

Color Analysis

Solids

The LAB SOLIDSIZER™ WITH COLOR ANALYSIS builds upon the LAB SOLIDSIZER™ framework by integrating an additional color vision system module to provide continuous, color analysis and speck detection as well as particle characterization on the sample.



Global Support



J.M. Canty, USA
6100 Donner Road
Buffalo, NY 14094
Phone: (716) 625-4227
Fax: (716) 625 - 4228

Email: sales@jmcanty.com



J.M. Canty, LTD
Ballycoolin Business Park
Blanchardstown
Dublin 15, Ireland
Phone: +353 (01) 882-9621
Fax: +353 (01) 882-9622

Email: sales.ie@jmcanty.com